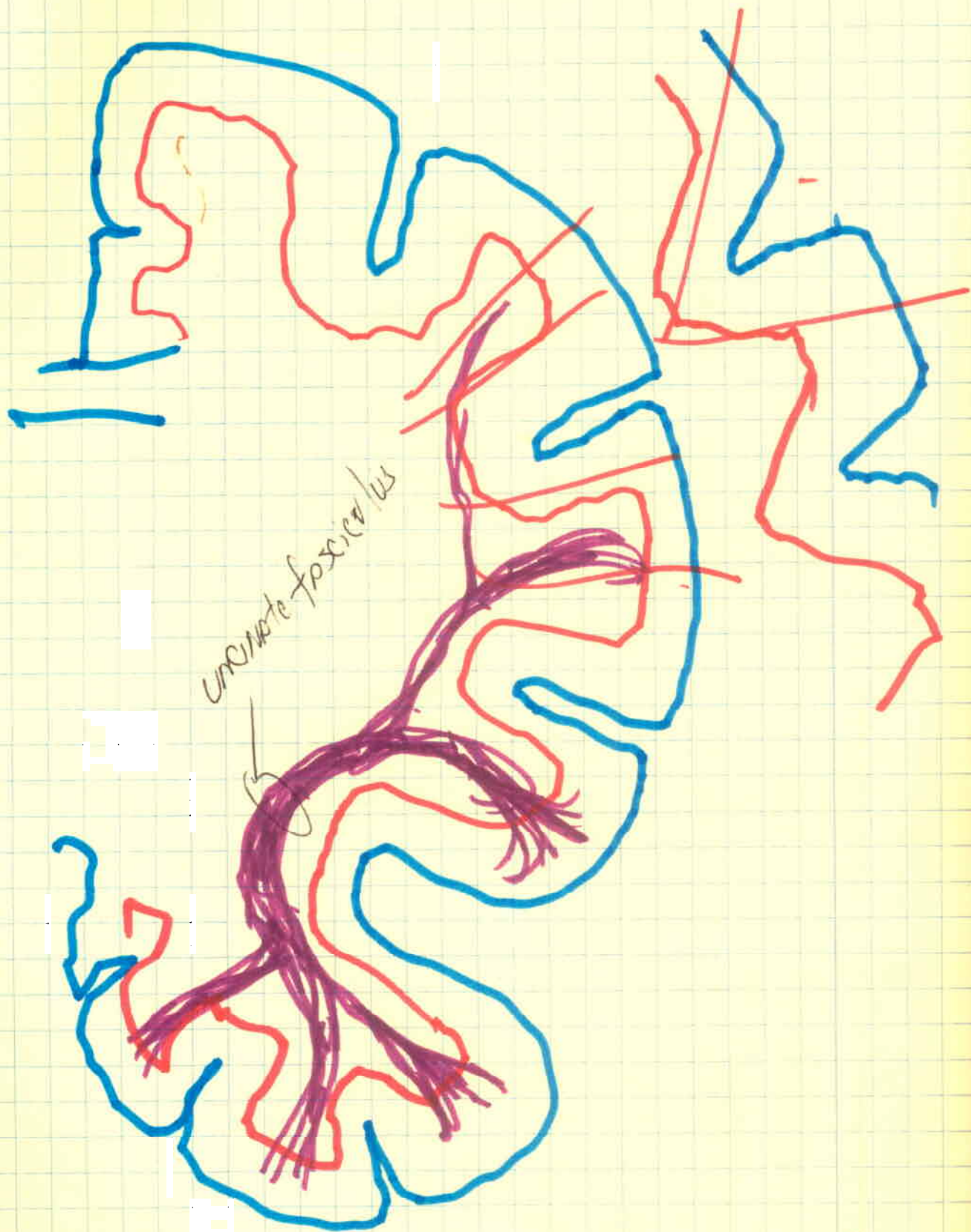


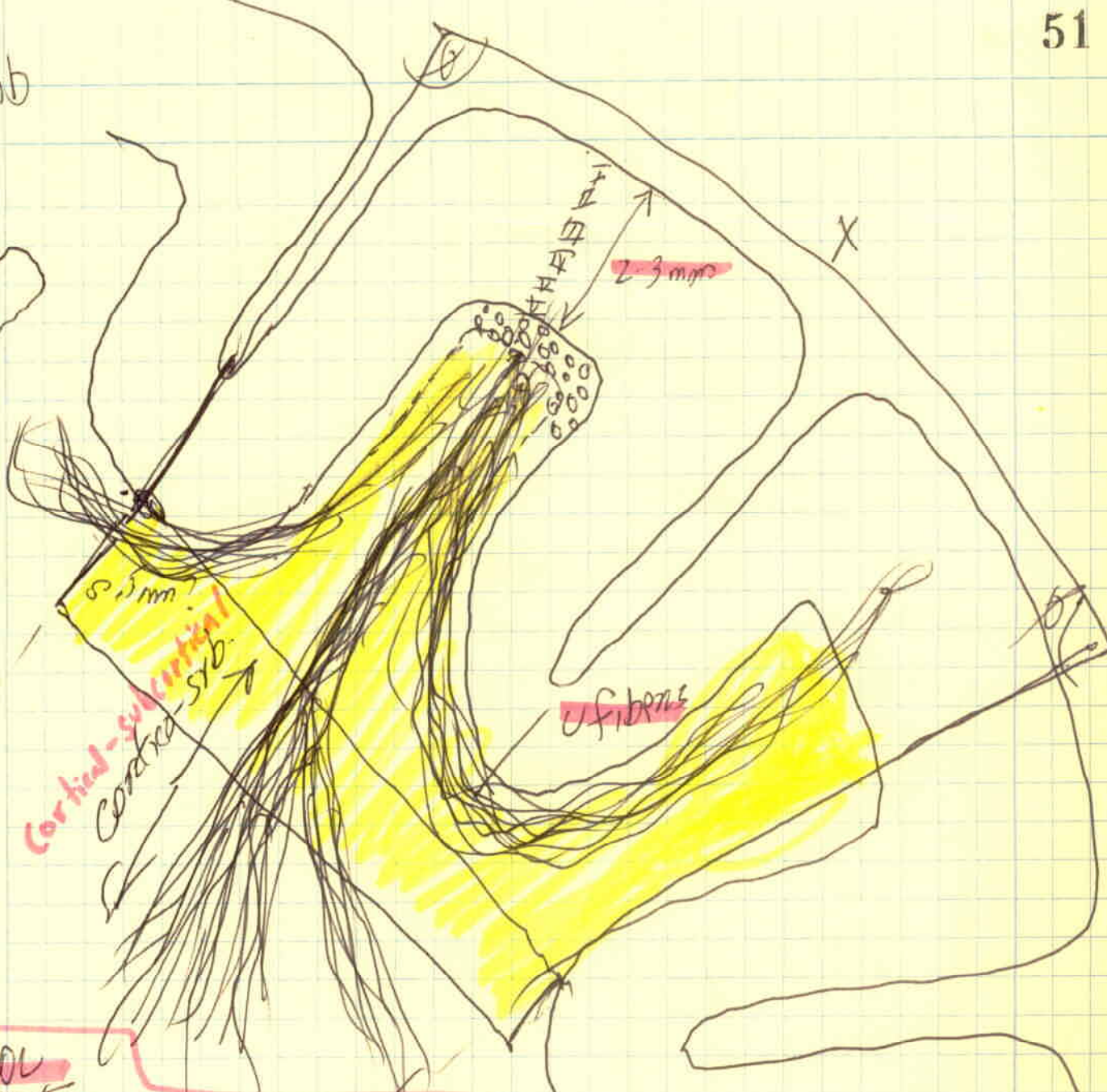
17 JUN 2005

UCI TRIP



uncinate fasciculus

SVN -
Sub-ventricular
Zone

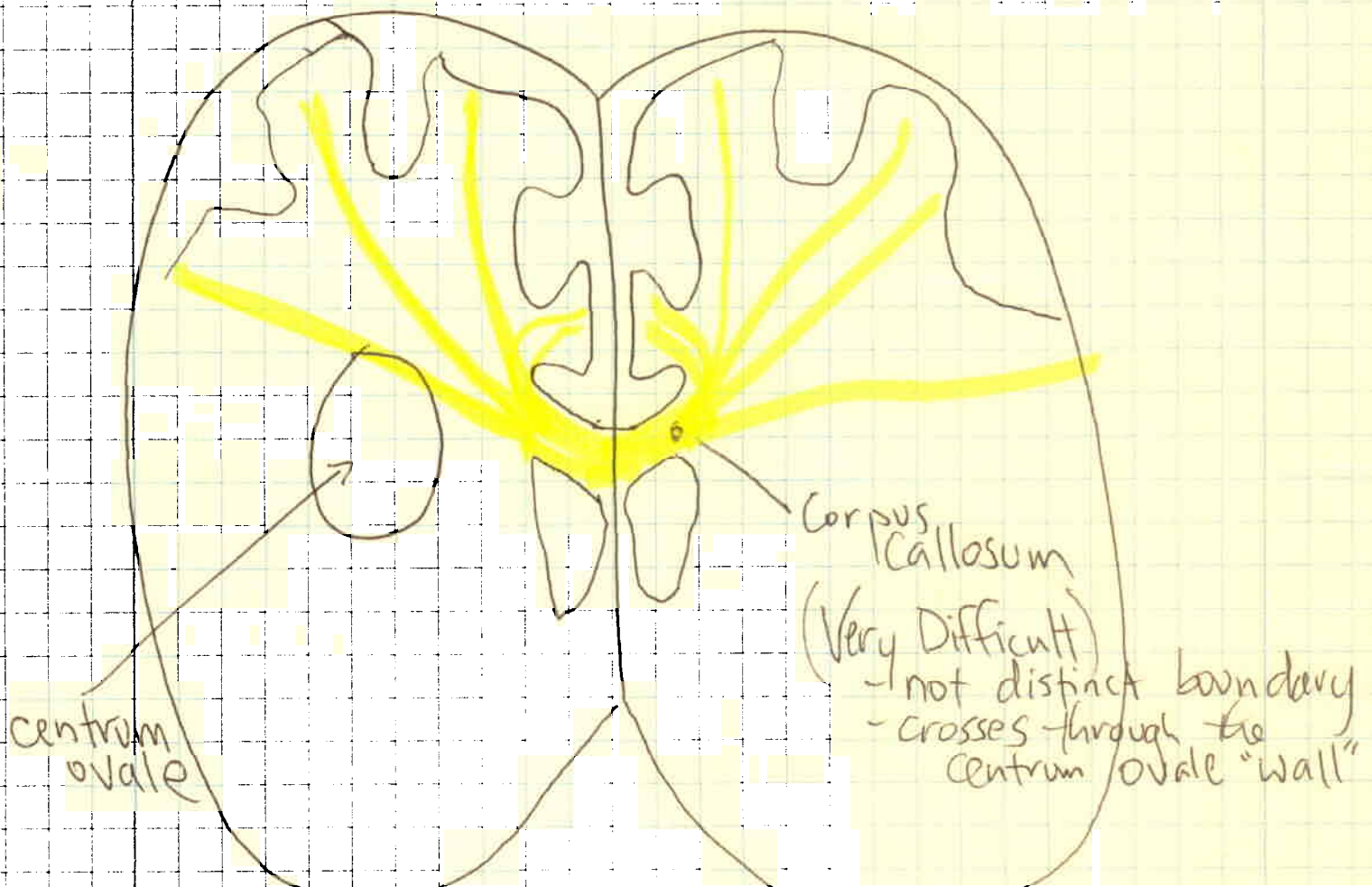


MONOTOPIC DEVELOPMENT



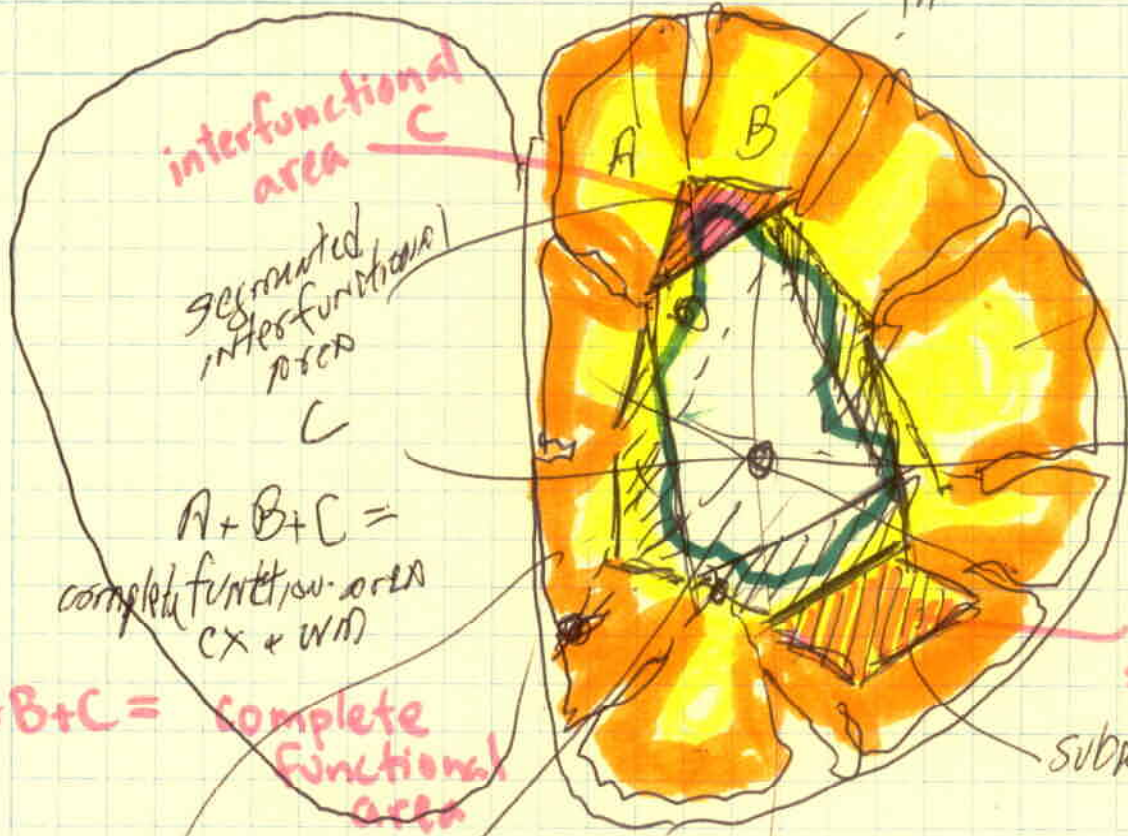
The centrum ovale

- A central white matter area that exhibits a traffic jam of axons
- Found by taking the leftovers after removing the thumbs or interlobular structures which include the thumbs and a $\sim 0.5\text{mm}$ fudge factor.
- If the centrum ovale becomes a polygon, could smooth.



Thumb A

Thumb B



interfunctional area C

segmented interfunctional area C

$A + B + C =$
complete functional area
CX + WM

$A + B + C =$ complete functional area

50°B

interlobular sulcus to adjacent sulcus

subpractical w.m.

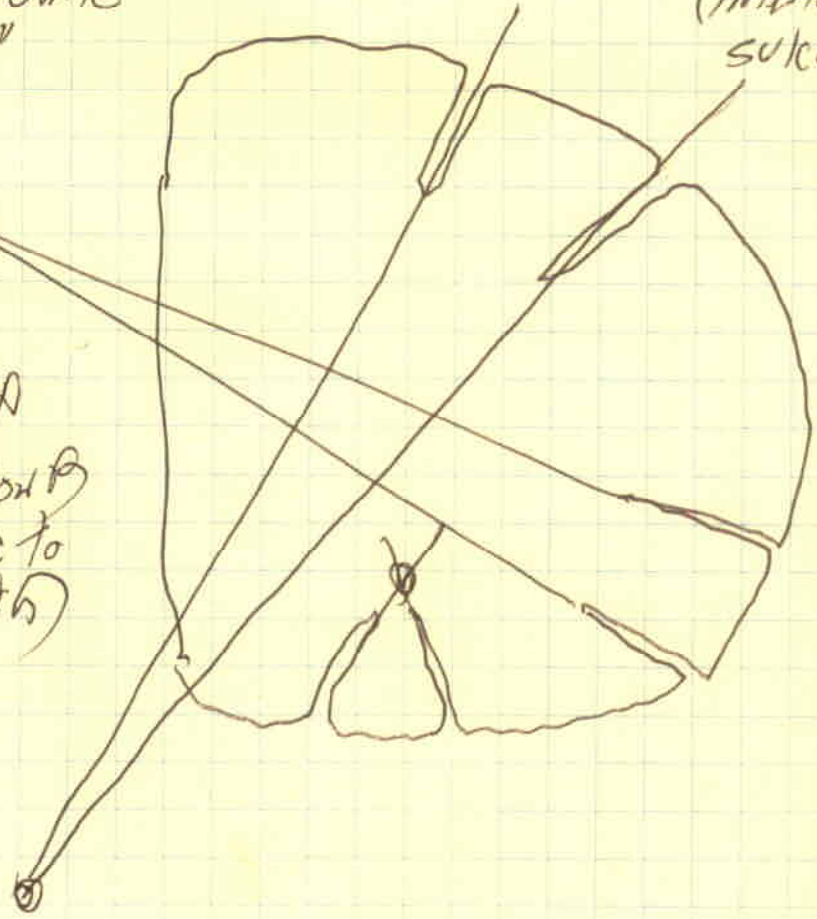
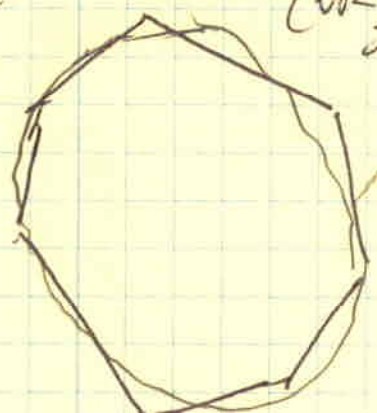
Thumb + fudge factor
(interlobular) sulcus to adjacent sulcus

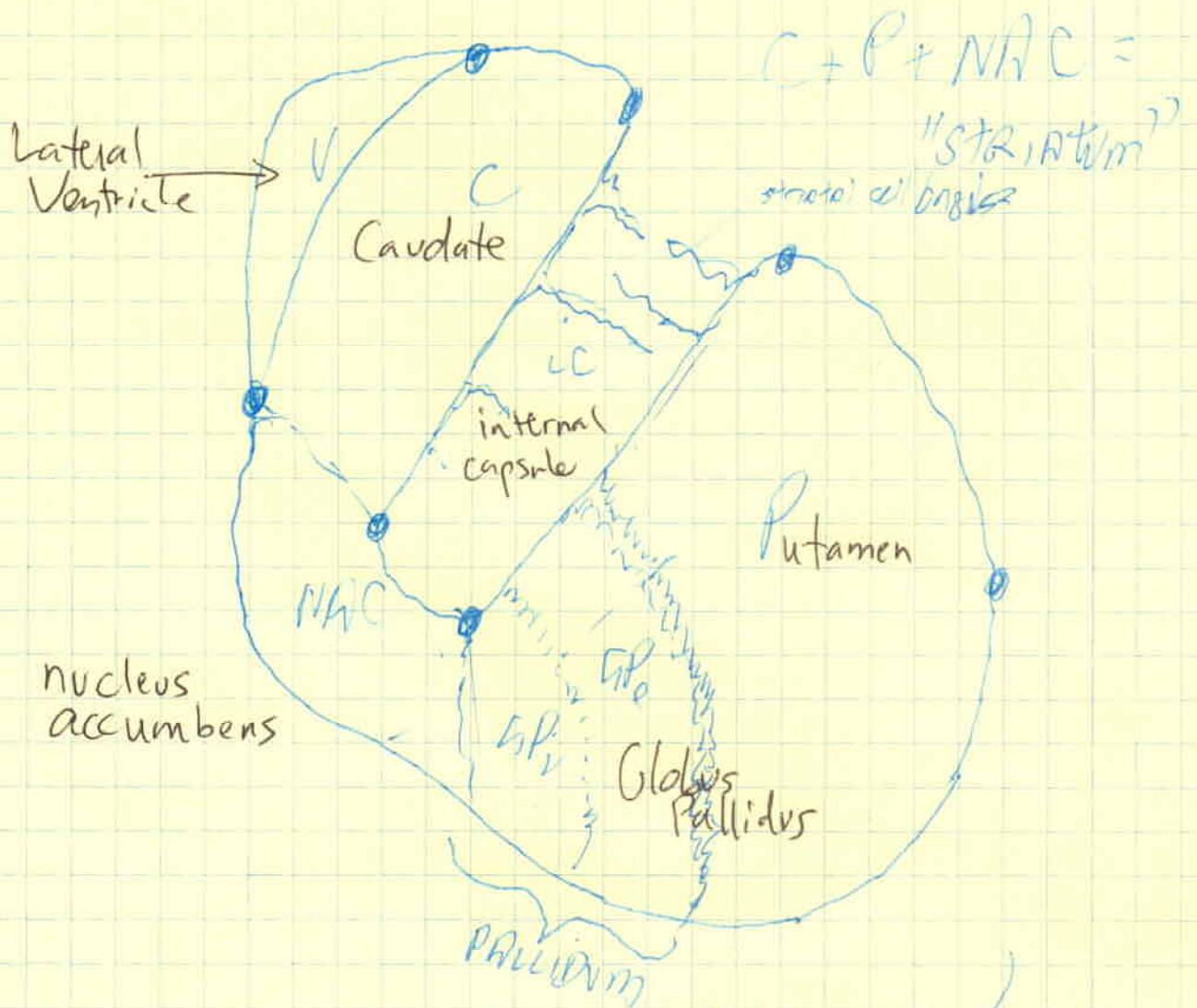
50°A

"Centrum Ovale"
"CO,"

option A
option B
(or spline to smooth)

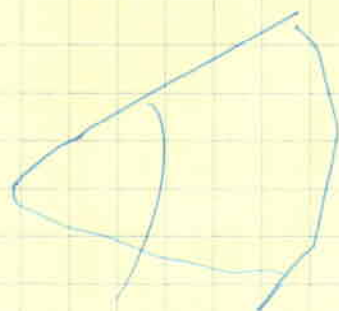
main ovale polygon



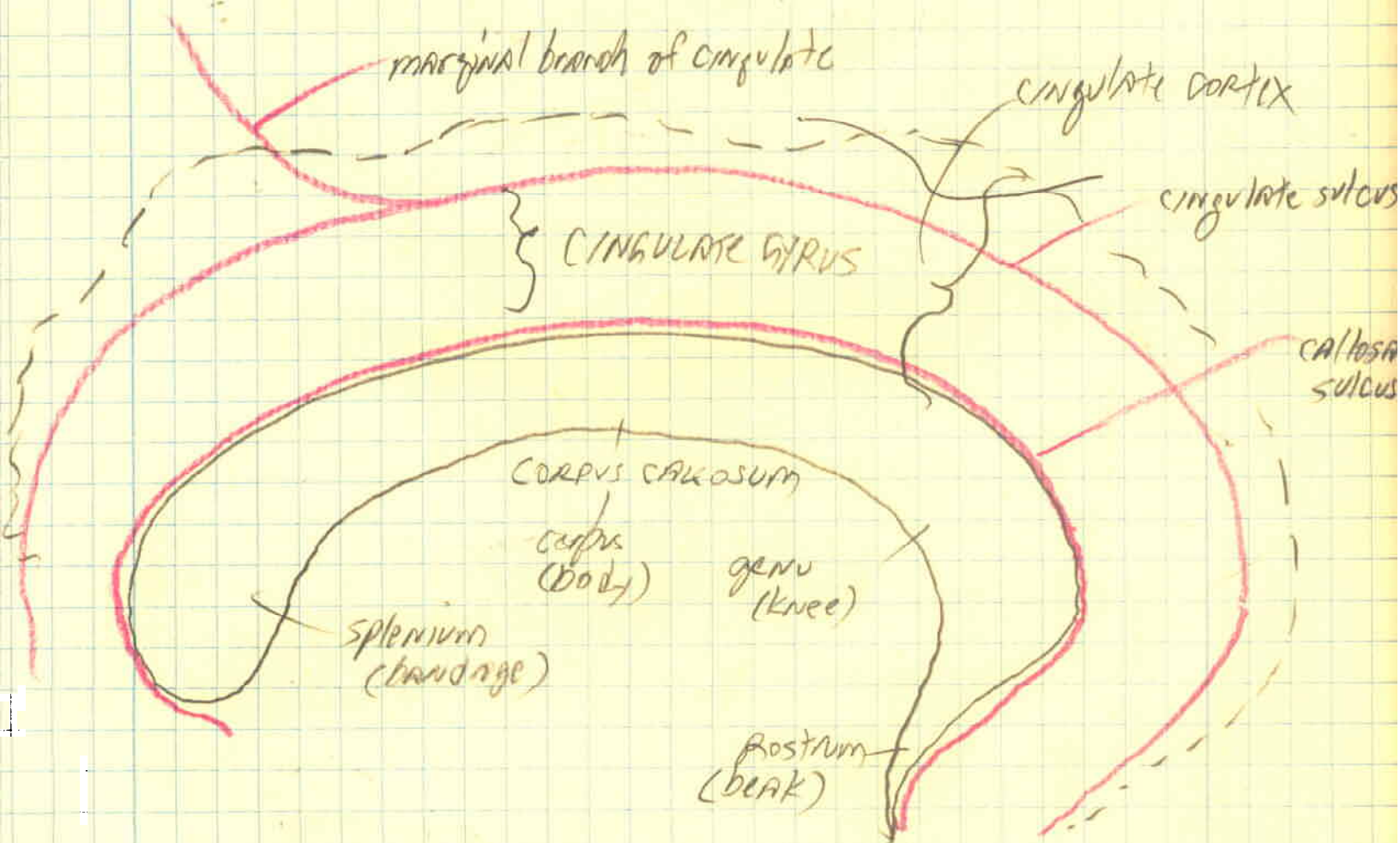


GP_i + GP_e + P

||
Lentiform nucleus



↳ misnomer



The cingulate sulcus is never [^]continuous single groove
 It is broken up, doubled up, and the actual

CINGULATE

BA = BRODMANN AREA

