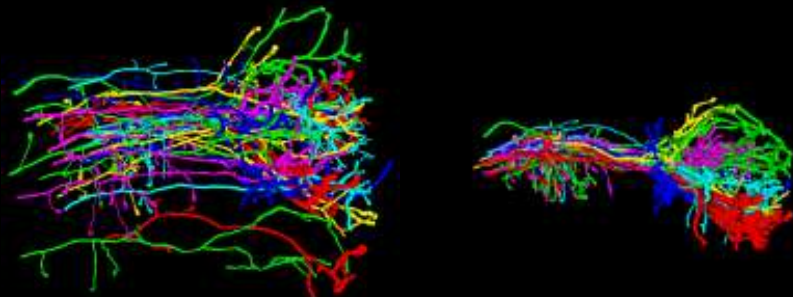
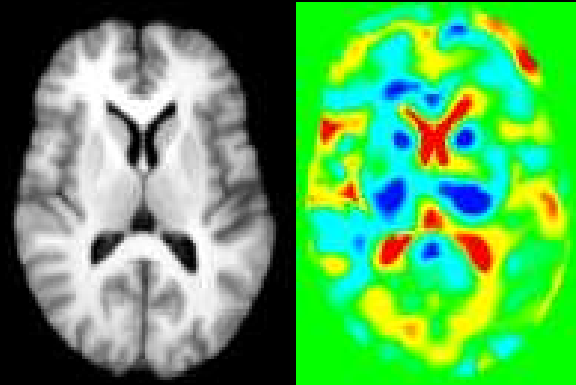


# Nonrigid Registration

- Deformation morphometry
- Inter-subject mapping
- Distortion correction
- High-performance computing
- Curvature-PDE registration in ITK



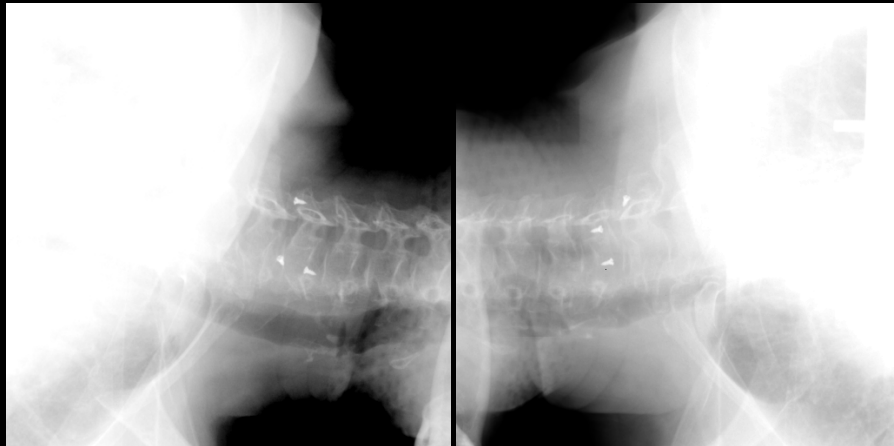
# Multi-Classifer Techniques

- Atlas-based segmentation using multiple atlases
- Classifier performance (STAPLE)



# Image Guidance

- 2D/3D registration
- Attenuation fields
- Fast object tracking



# Not Much DTI (yet)

- Obtained external tools for simple DTI analyses – Imaging, distortion correction, FA maps, statistics, etc.
- Contributed to ITK Tensor Implementation
- Looking for batch processing fiber tracking and analysis tools
- Starting work on multi-subject DTI representations and analyses