

DICOM FILES



FAVORITES



All My Files



AirDrop



Desktop



joaorobertogoncalves



Applications



Documents



18 Holding back the years.wma

DEVICES



Skype



CBCT Data



T1



T2



T3





FAVORITES

- All My Files
- AirDrop
- Desktop
- joarobertogoncalves
- Applications
- Documents
- 18 Holding back the years.wma

DEVICES

- Skype
- CBCT Data**

- T1**
- T2
- T3

- DCT0000.DCM
- DCT0001.DCM
- DCT0002.DCM
- DCT0003.DCM
- DCT0004.DCM
- DCT0005.DCM
- DCT0006.DCM
- DCT0007.DCM
- DCT0008.DCM
- DCT0009.DCM
- DCT0010.DCM
- DCT0011.DCM
- DCT0012.DCM
- DCT0013.DCM
- DCT0014.DCM
- DCT0015.DCM
- DCT0016.DCM
- DCT0017.DCM
- DCT0018.DCM
- DCT0019.DCM
- DCT0020.DCM
- DCT0021.DCM
- DCT0022.DCM
- DCT0023.DCM
- DCT0024.DCM
- DCT0025.DCM
- DCT0026.DCM
- DCT0027.DCM
- DCT0028.DCM

©CONVERT:

DICOM TO GIPL

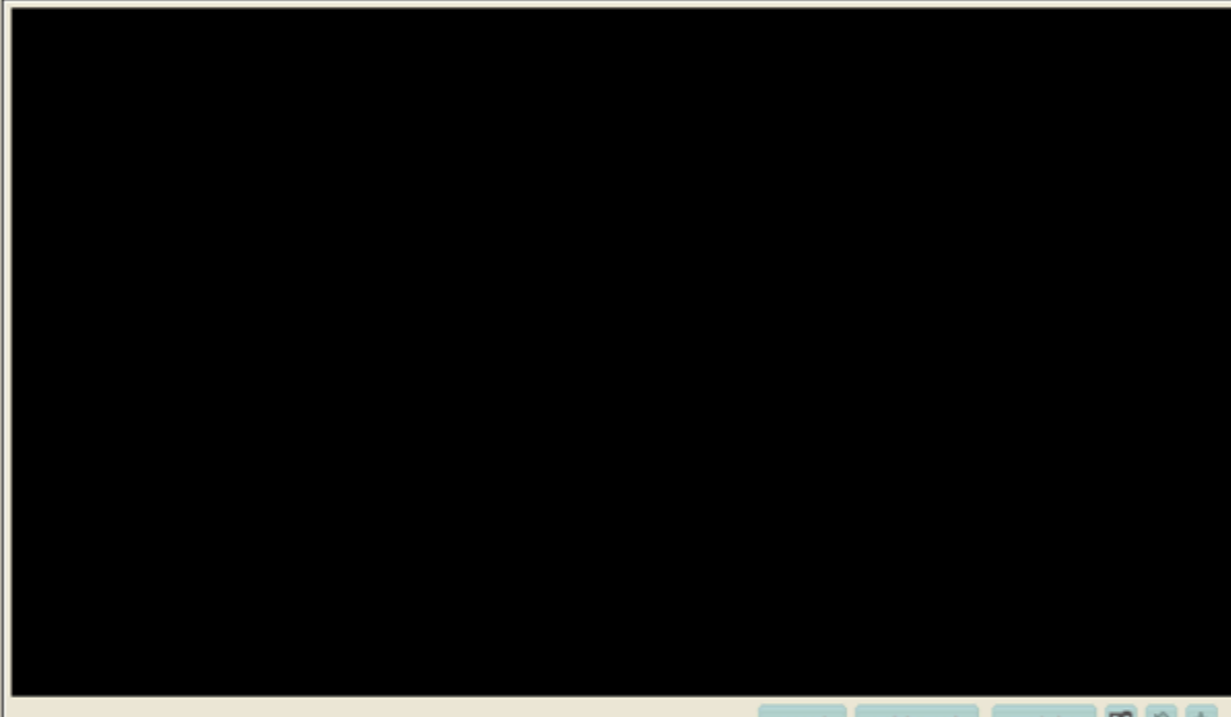
<http://www.itksnap.org/pmwiki/pmwiki.php?n=Documentation.TutorialSectionIntroduction>

ITK-SNAP

**ITK-SNAP**  
Version 2.2.0  
May 4, 2011

**Tip of the day:**  
ITK-SNAP supports multiple image layers. Each layer has its own contrast settings, opacity, and color map. Load layers using the 'Overlay' menu. Edit them using the Layer Inspector, under 'Tools'.

Next Tip



zoom to fit

zoom to fit

zoom to fit

File Segmentation Overlay Tools Layout Help

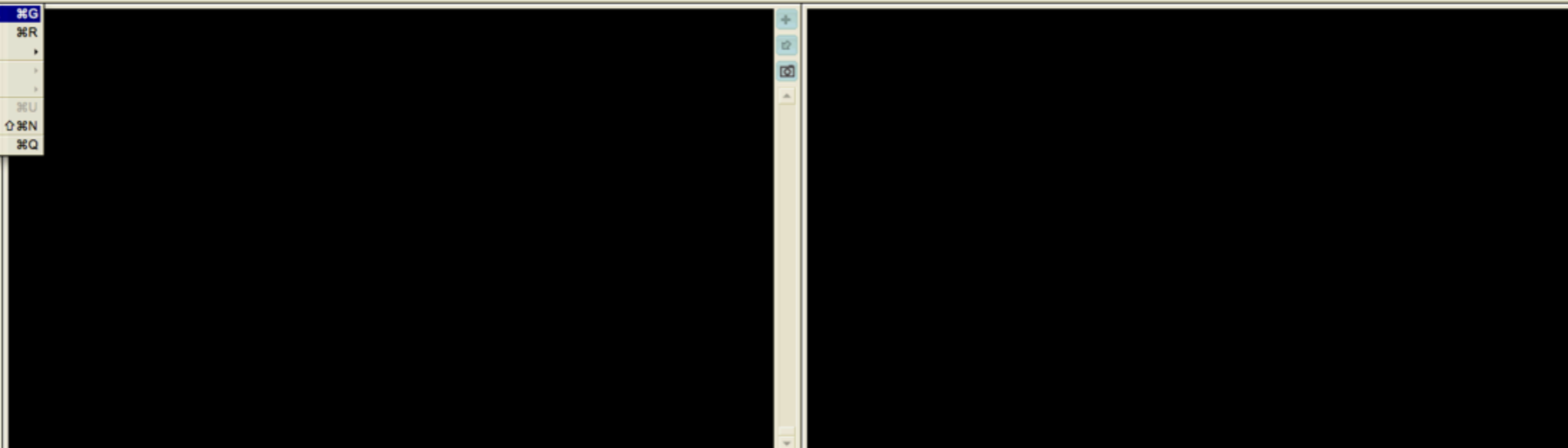
- Open Greyscale Image... ⌘G
- Open RGB Image... ⌘R
- Open Recent
- Save
- Export
- Unload All Images ⌘U
- New ITK-SNAP Window ⌘N
- Quit ⌘Q

**ITK-SNAP**  
Version 2.2.0  
May 4, 2011

Tip of the day:

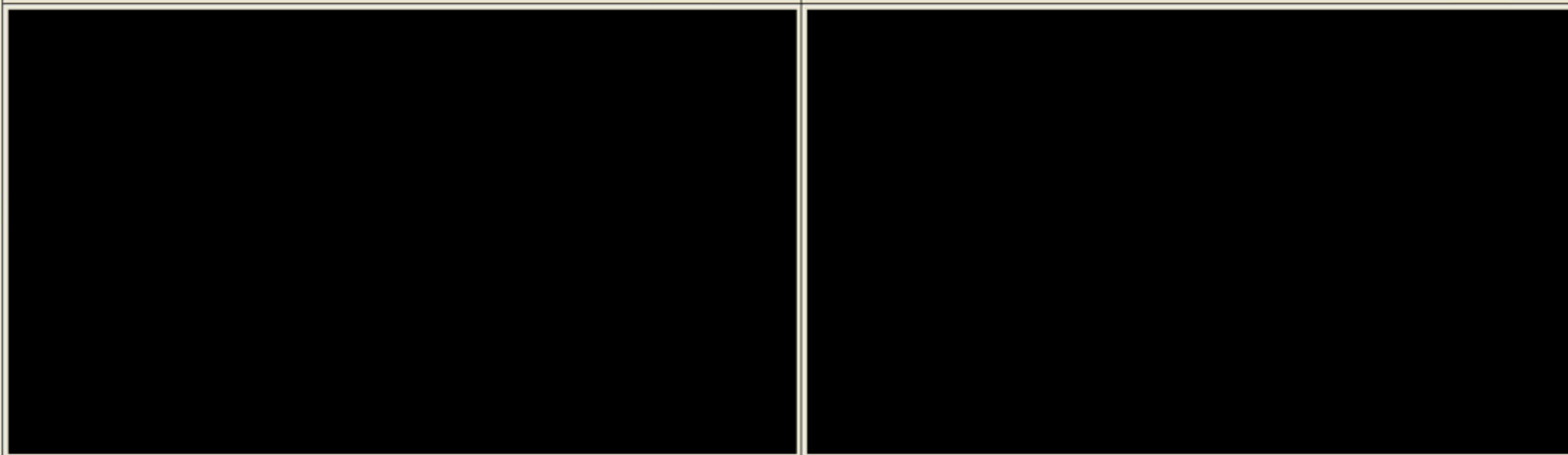
ITK-SNAP supports multiple image layers. Each layer has its own contrast settings, opacity, and color map. Load layers using the 'Overlay' menu. Edit them using the Layer Inspector, under 'Tools'.

Next Tip



zoom to fit

zoom to fit



accept update mesh reset view

zoom to fit



**ITK-SNAP**  
Version 2.2.0  
May 4, 2011

Tip of the day:

ITK-SNAP supports multiple image layers. Each layer has its own contrast settings, opacity, and color map. Load layers using the 'Overlay' menu. Edit them using the Layer Inspector, under 'Tools'.

Next Tip

Wizard for loading a Greyscale image

Select a Greyscale image to load:

Image file name:

Image file format:



**ITK-SNAP**  
Version 2.2.0  
May 4, 2011

**Tip of the day:**  
ITK-SNAP supports multiple image layers. Each layer has its own contrast settings, opacity, and color map. Load layers using the 'Overlay' menu. Edit them using the Layer Inspector, under 'Tools'.

Next Tip

### Load Image

CBCT Data

FAVORITES

- All My Files
- Desktop
- joaorobertogoncalves
- Applications
- Documents
- 18 Holding back the years.wma

DEVICES

- Skype
- CBCT Data**

MEDIA

- Music
- Photos
- Movies

T1  
T2  
T3

Enable: All Image Files

Cancel Open



**ITK-SNAP**  
Version 2.2.0  
May 4, 2011

**Tip of the day:**  
ITK-SNAP supports multiple image layers. Each layer has its own contrast settings, opacity, and color map. Load layers using the 'Overlay' menu. Edit them using the Layer Inspector, under 'Tools'.

Next Tip

Load Image

T1

FAVORITES

- All My Files
- Desktop
- joaorbertogoncalves
- Applications
- Documents
- 18 Holding back the years.wma

DEVICES

- Skype
- CBCT Data

MEDIA

- Music
- Photos
- Movies

T1

- T2
- T3

DCT0000.DCM

DCT0001.DCM

DCT0002.DCM

DCT0003.DCM

DCT0004.DCM

DCT0005.DCM

DCT0006.DCM

DCT0007.DCM

DCT0008.DCM

DCT0009.DCM

DCT0010.DCM

DCT0011.DCM

DCT0012.DCM

DCT0013.DCM

DCT0014.DCM

DCT0015.DCM

DCT0016.DCM

DCT0017.DCM

DCT0018.DCM

DCT0019.DCM

DCT0020.DCM

DCT0021.DCM

DCT0022.DCM

DCT0023.DCM

DCT0024.DCM

DCT0025.DCM

DCT0026.DCM

DCT0027.DCM

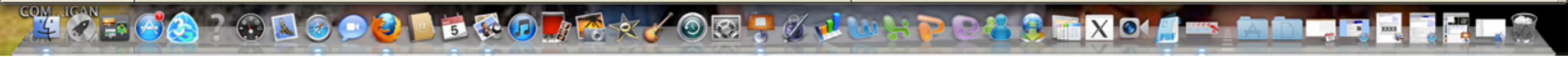
DCT0028.DCM

Enable: All Image Files

Cancel Open

accept update mesh reset view

zoom to fit



**ITK-SNAP**  
Version 2.2.0  
May 4, 2011

**Tip of the day:**  
ITK-SNAP supports multiple image layers. Each layer has its own contrast settings, opacity, and color map. Load layers using the 'Overlay' menu. Edit them using the Layer Inspector, under 'Tools'.

Next Tip

Load Image

T1

FAVORITES

- All My Files
- Desktop
- joaorbertogoncalves
- Applications
- Documents
- 18 Holding back the years.wma

DEVICES

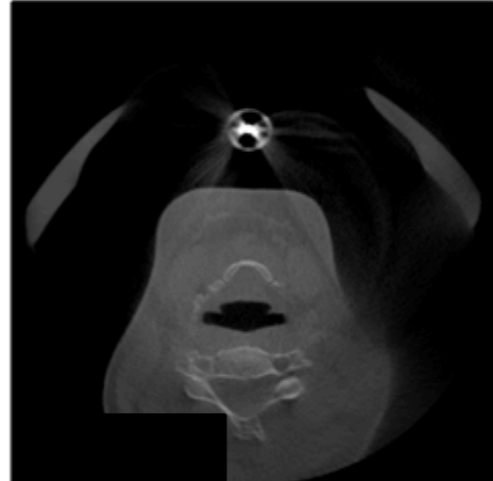
- Skype
- CBCT Data

MEDIA

- Music
- Photos
- Movies

T1

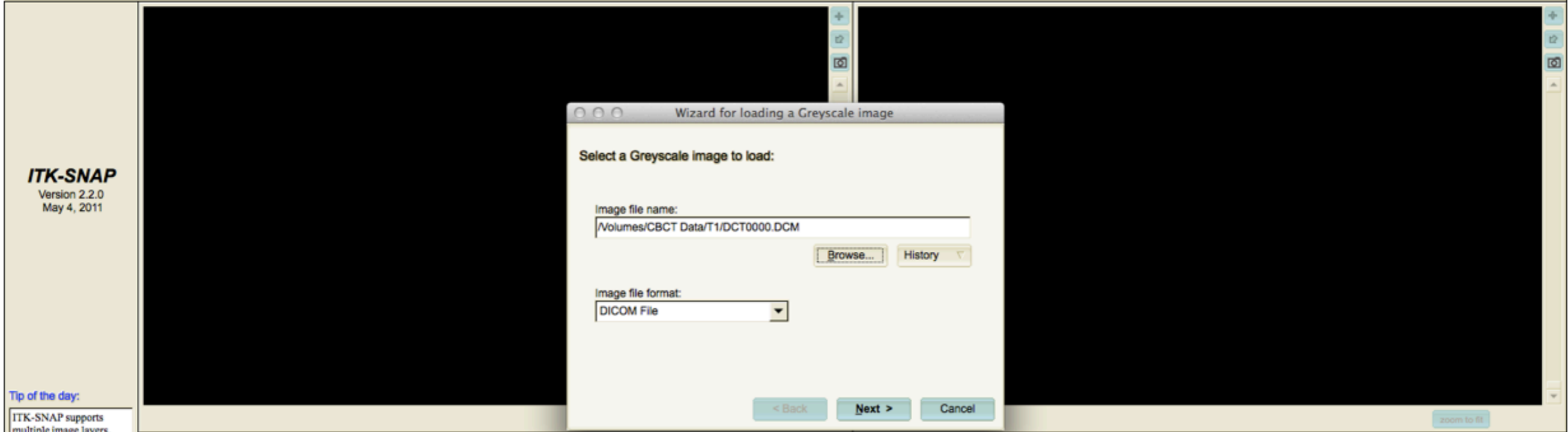
- DCT0000.DCM
- DCT0001.DCM
- DCT0002.DCM
- DCT0003.DCM
- DCT0004.DCM
- DCT0005.DCM
- DCT0006.DCM
- DCT0007.DCM
- DCT0008.DCM
- DCT0009.DCM
- DCT0010.DCM
- DCT0011.DCM
- DCT0012.DCM
- DCT0013.DCM
- DCT0014.DCM
- DCT0015.DCM
- DCT0016.DCM
- DCT0017.DCM
- DCT0018.DCM
- DCT0019.DCM
- DCT0020.DCM
- DCT0021.DCM
- DCT0022.DCM
- DCT0023.DCM
- DCT0024.DCM
- DCT0025.DCM
- DCT0026.DCM
- DCT0027.DCM



Name: DCT0000.DCM  
Kind: DICOM Image  
Size: 501 KB  
Created: 14 de outubro de 2011 17:31  
Modified: 14 de outubro de 2011 17:31  
Last opened: 14 de outubro de 2011 17:31

Enable: All Image Files

Cancel Open



**ITK-SNAP**  
Version 2.2.0  
May 4, 2011

Tip of the day:

ITK-SNAP supports multiple image layers. Each layer has its own contrast settings, opacity, and color map. Load layers using the 'Overlay' menu. Edit them using the Layer Inspector, under 'Tools'.

Next Tip

**ITK-SNAP**  
Version 2.2.0  
May 4, 2011

Tip of the day:

ITK-SNAP supports multiple image layers. Each layer has its own contrast settings, opacity, and color map. Load layers using the 'Overlay' menu. Edit them using the Layer Inspector, under 'Tools'.

Next Tip

Wizard for loading a Greyscale image

DICOM Input Options:

Load by sequence (all slices with the sequence id below)

Sequence id:

Load by filename order

First Slice:  Last Slice:

Load all slices in the directory

< Back Next > Cancel

**ITK-SNAP**  
Version 2.2.0  
May 4, 2011

**Wizard for loading a Greyscale image**

DICOM Input Options:

- Load by sequence (all slices with the sequence id below)  
Sequence id: 1.2.410.200017.0.25570622.1.03607.321136;
- Load by filename order  
First Slice: 1 Last Slice: 1
- Load all slices in the directory

< Back Next > Cancel

zoom to fit

Tip of the day:  
ITK-SNAP supports multiple image layers. Each layer has its own contrast settings, opacity, and color map. Load layers using the 'Overlay' menu. Edit them using the Layer Inspector, under 'Tools'.

Next Tip

accept update mesh reset view zoom to fit

**ITK-SNAP**  
Version 2.2.0  
May 4, 2011

**Tip of the day:**

ITK-SNAP supports multiple image layers. Each layer has its own contrast settings, opacity, and color map. Load layers using the 'Overlay' menu. Edit them using the Layer Inspector, under 'Tools'.

Next Tip

Wizard for loading a Greyscale image

**Image Summary:**

File name: /Volumes/CBCT Data/T1/DCT0475.DCM

Dimensions: 500 500 476 Orientation: RAI

Spacing: 0.4 0.4 0.4 Byte order: Little Endian

Origin: 0 0 0.4 Data type: short

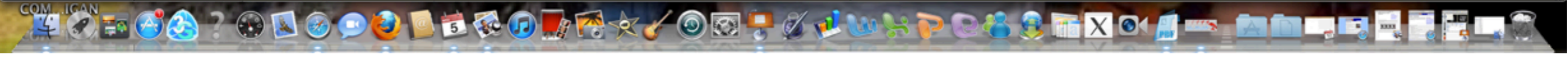
Size in KB: 488

Image Header:

Header Field	Value
Group Length	208
File Meta Information Version	AAE=
Media Storage SOP Class UID	1.2.840.10008.5.1.4.1.1.2
Media Storage SOP Instance UID	1.2.410.200017.0.25570622.2.0

< Back Finish Cancel

accept update mesh reset view



**Main Toolbox**

**Tool Options**

**Crosshairs Tool**

Intensity: -547 Label: 0

Label description:  
Clear Label

Multisession cursor

**Segmentation Options**

Active drawing label:  
Label 2

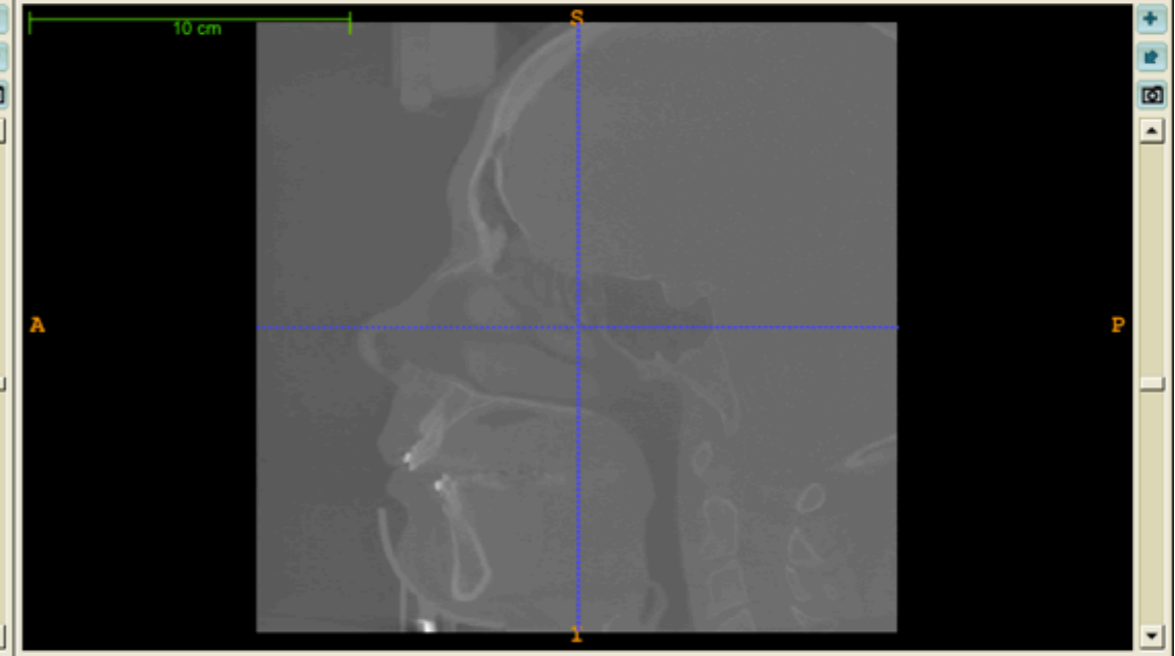
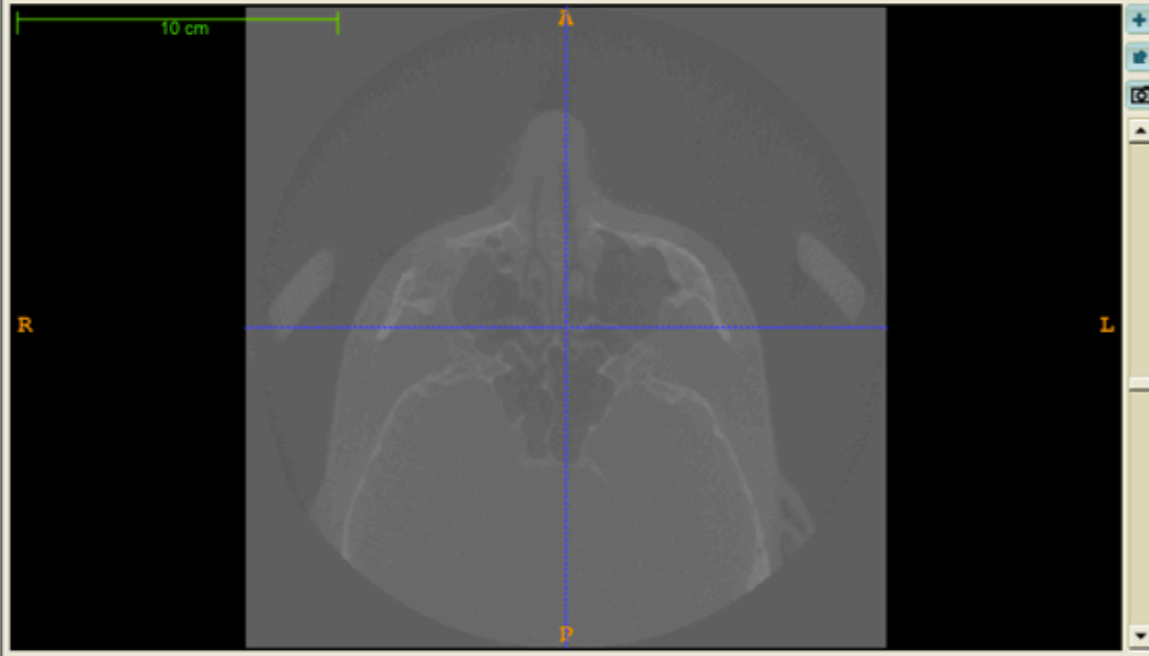
Draw over:  
All labels

Draw inverted

Overall label opacity:  
128

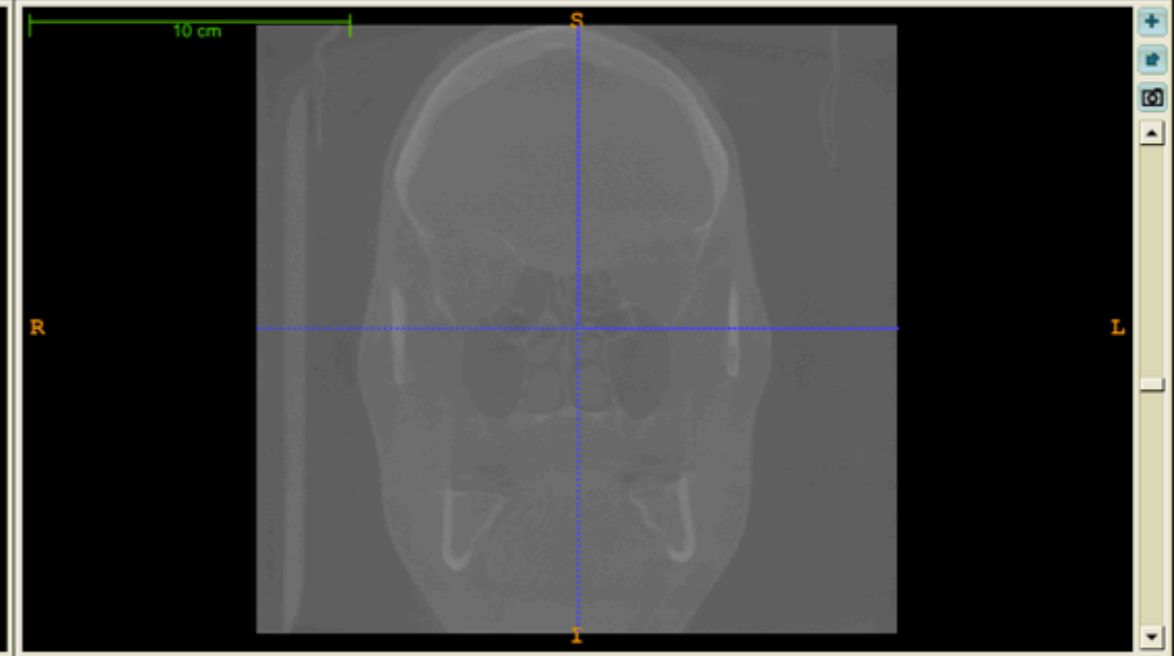
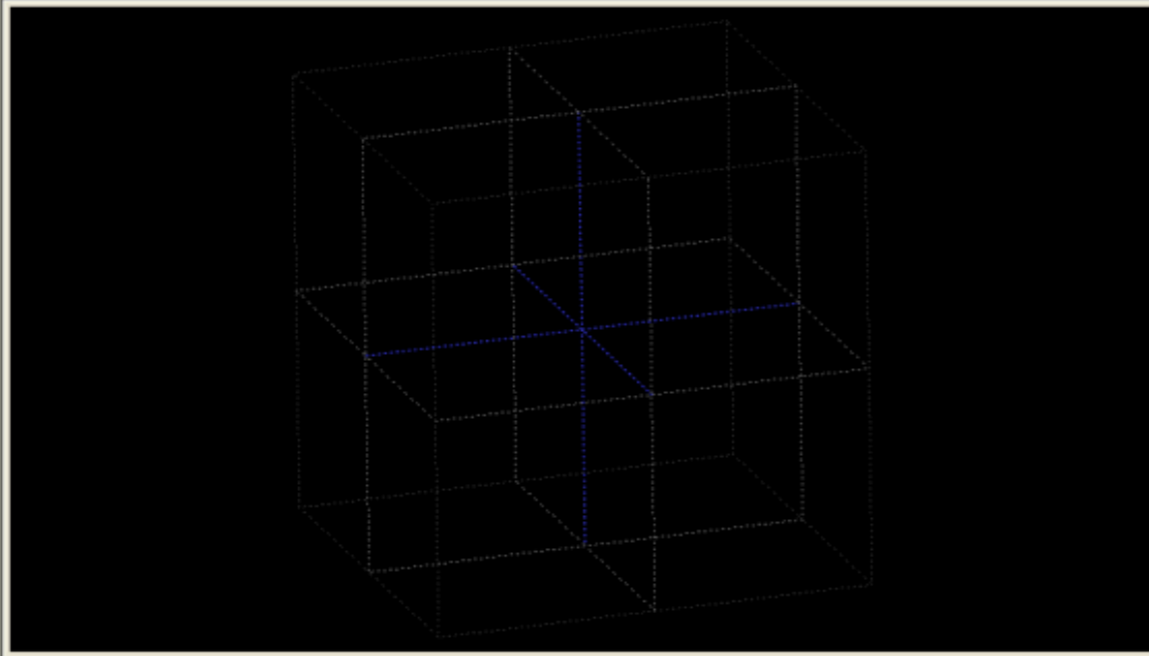
Label editor  
Undo Redo

**3D Toolbox**



zoom to fit 239 of 476

zoom to fit 251 of 500



accept update mesh reset view

zoom to fit 251 of 500

Main Toolbox

Tool Options

Crosshairs Tool

Intensity: -547 Label: 0

Label description: Clear Label

Multisession cursor

Segmentation Options

Active drawing label: Label 2

Draw over: All labels

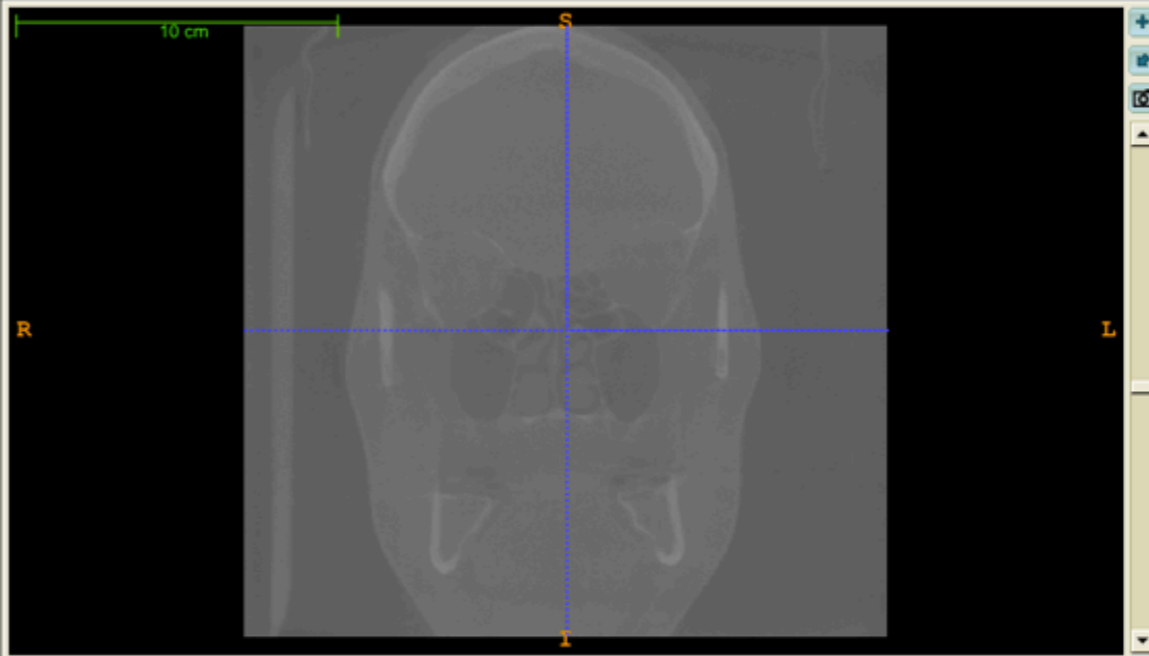
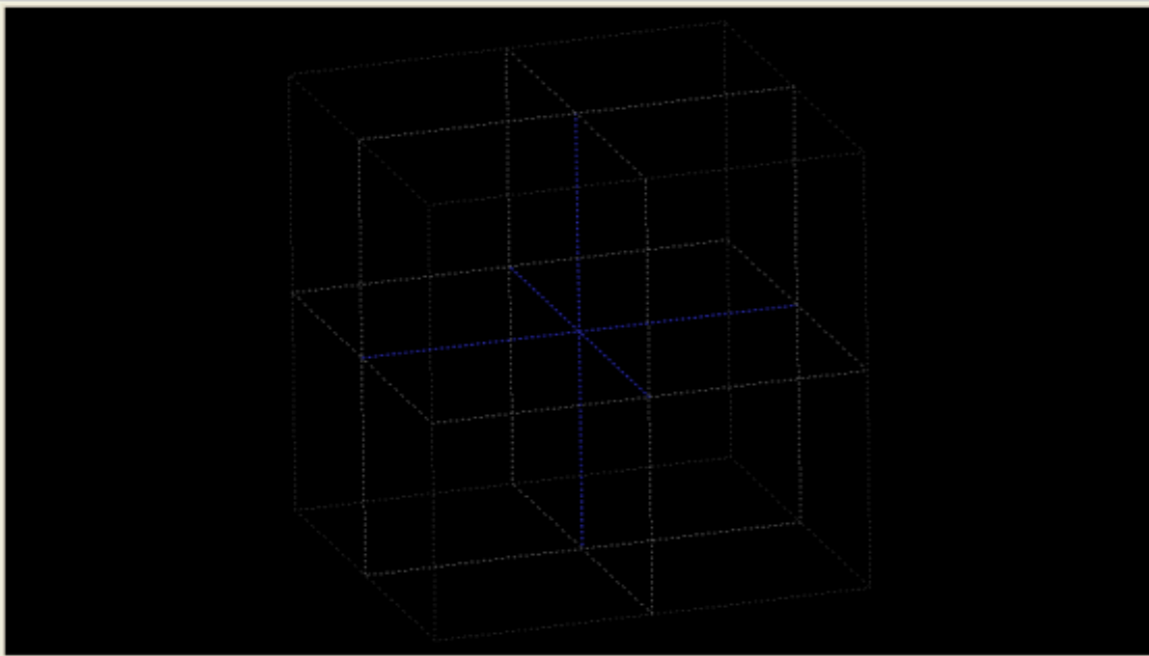
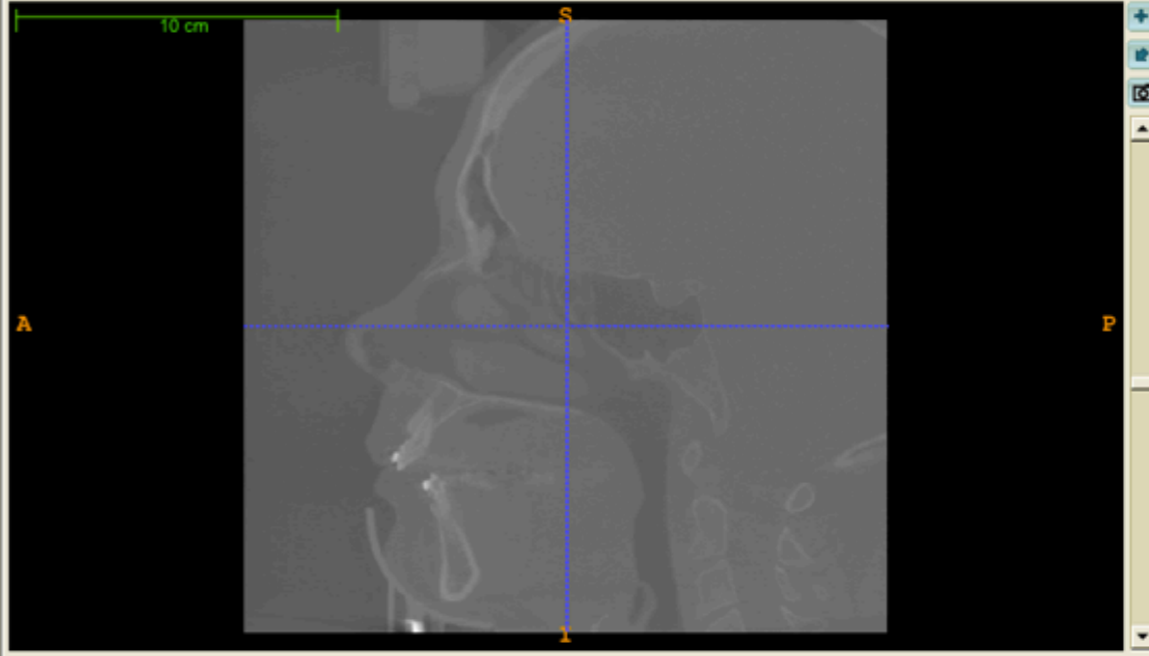
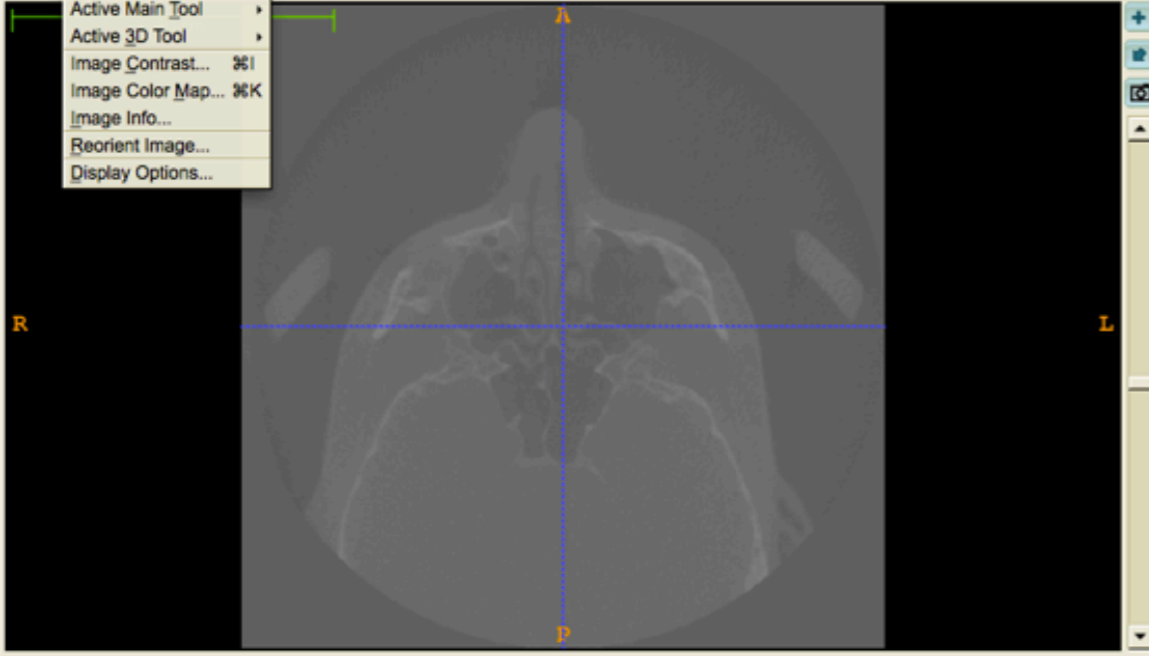
Draw inverted

Overall label opacity: 128

Label editor

Undo Redo

3D Toolbox





File Segmentation Overlay Tools Layout Help

Main Toolbox



Tool Options

Crosshairs Tool

Intensity: -547 Label: 0

Label description: Clear Label

Multisession cursor

Segmentation Options

Active drawing label: Label 2

Draw over: All labels

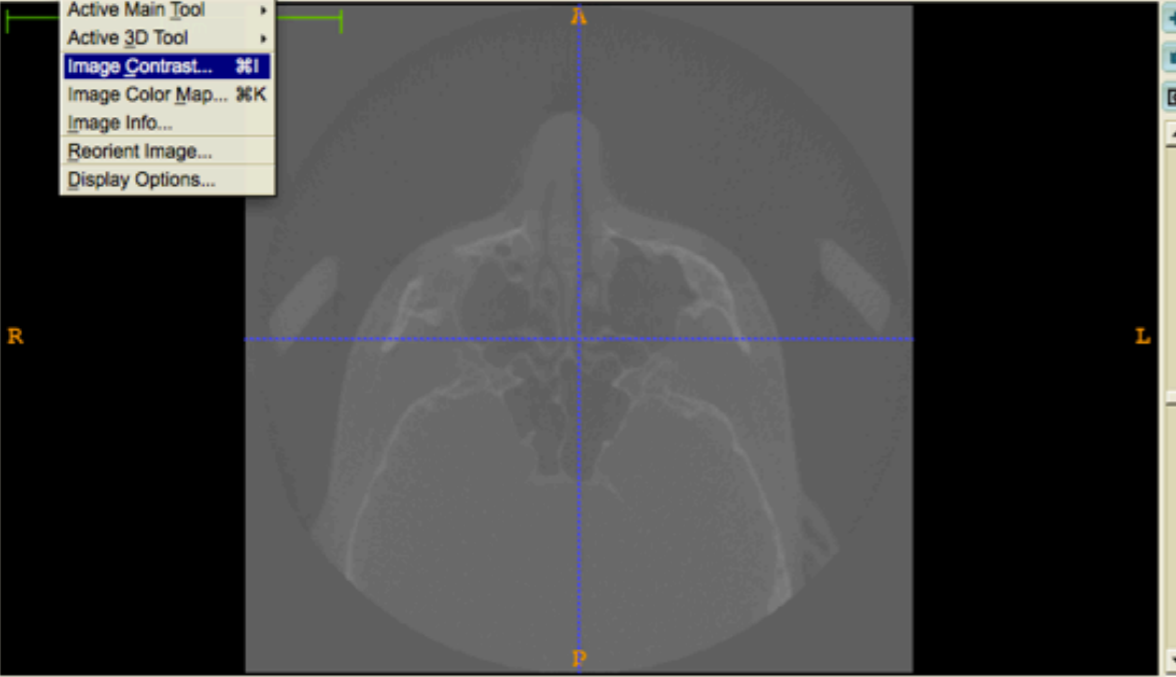
Draw inverted

Overall label opacity: 128

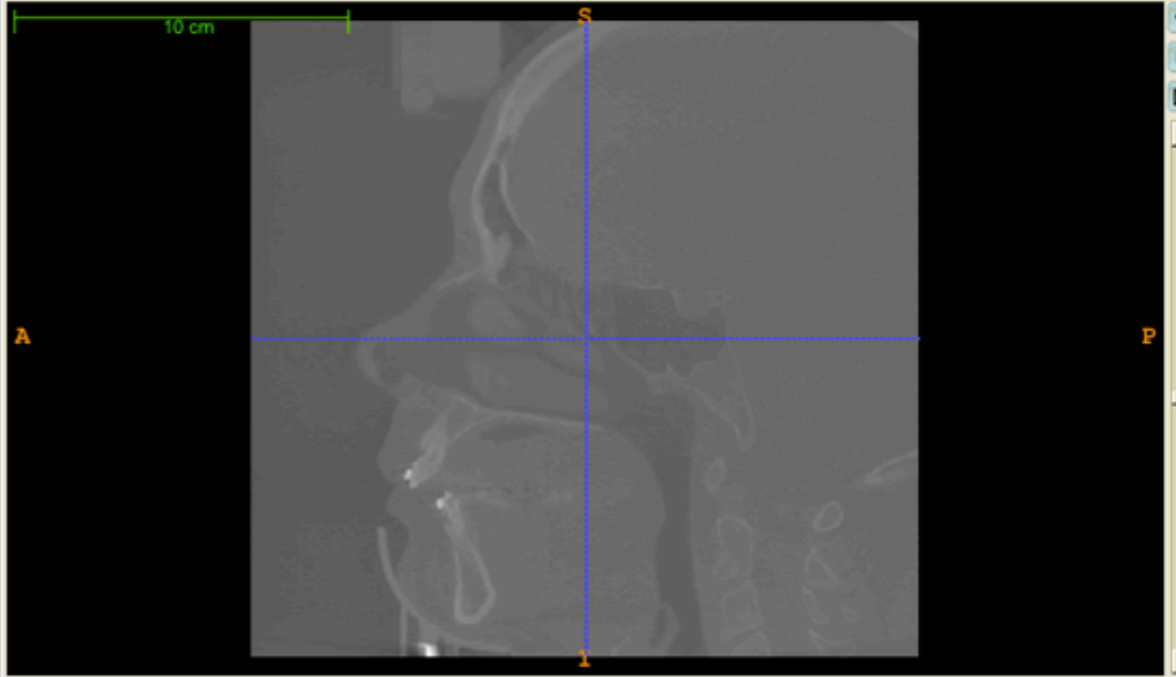
Label editor

Undo Redo

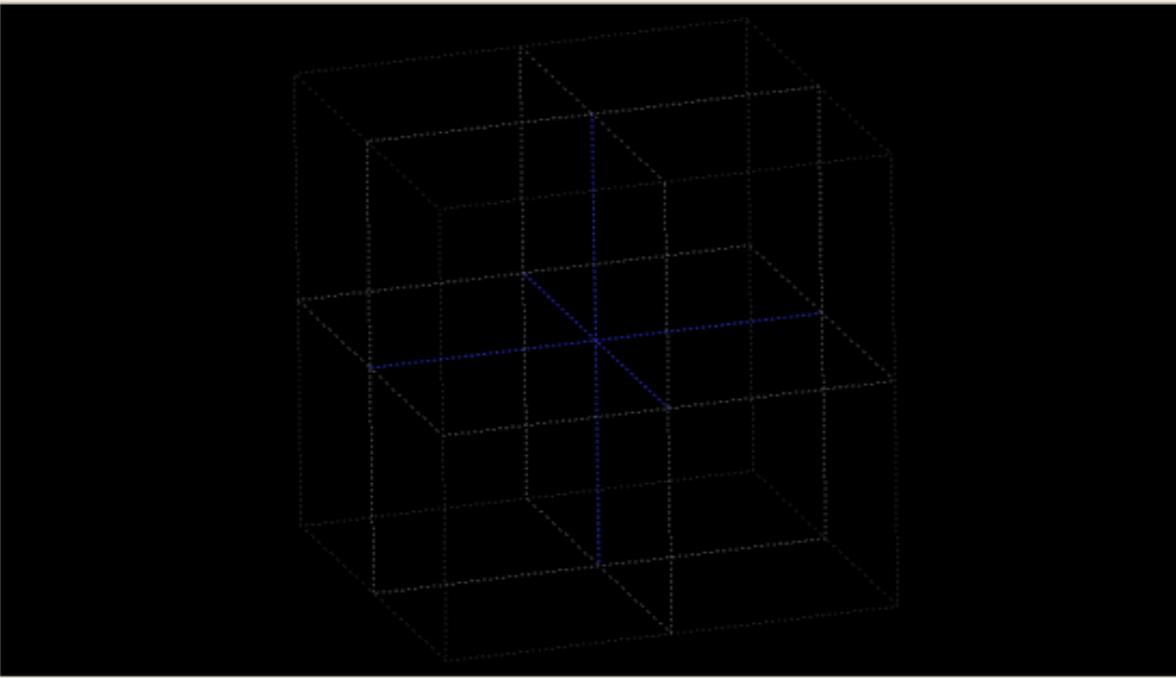
3D Toolbox



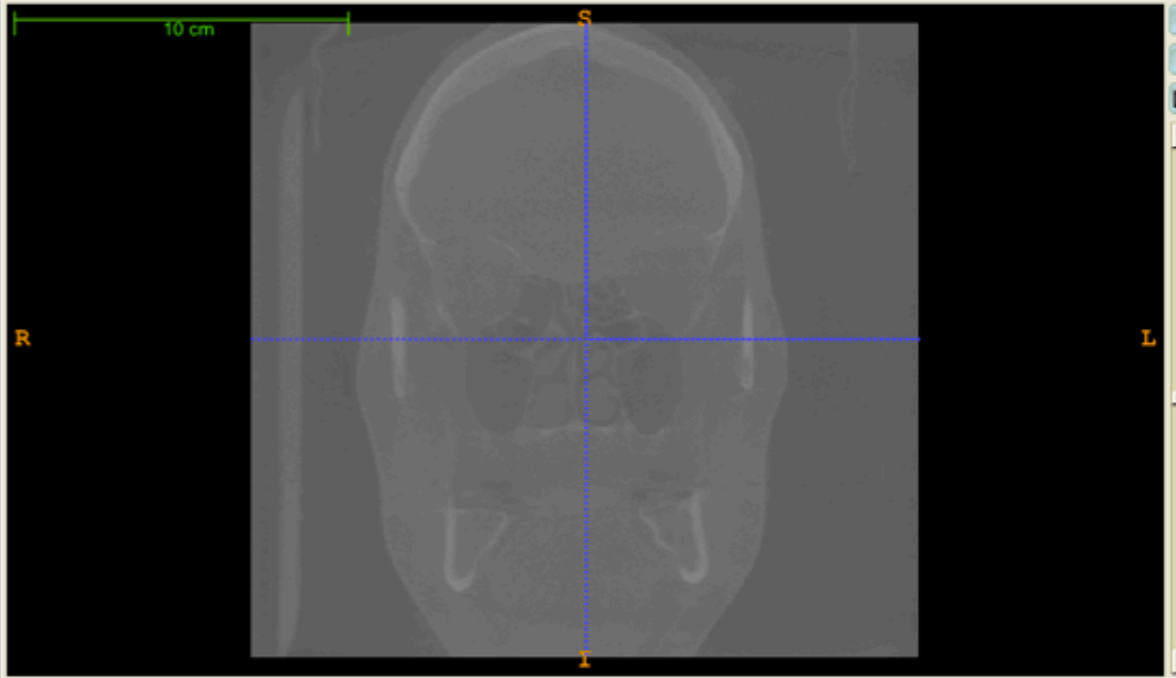
zoom to fit 239 of 476



zoom to fit 251 of 500



accept update mesh reset view



zoom to fit 251 of 500

**Main Toolbox**

**Tool Options**

**Crosshairs Tool**

Intensity: -547 Label: 0

Label description: Clear Label

Multisession cursor

Overall opacity: 255

Use Q,W,E keys to adjust

**Segmentation Options**

Active drawing label: Label 2

Draw over: All labels

Draw inverted

Overall label opacity: 128

Label editor Undo Redo

**3D Toolbox**

ITK-SNAP: Layer Inspector

**Layer Inspector**

Image Layers: Main Image (Greyscale)

Contrast Color Map Information Advanced Info

**Window and Level:**

Level: -12672.00 Window: 29055 Auto

**Curve-Based Adjustment:**

output image intensity

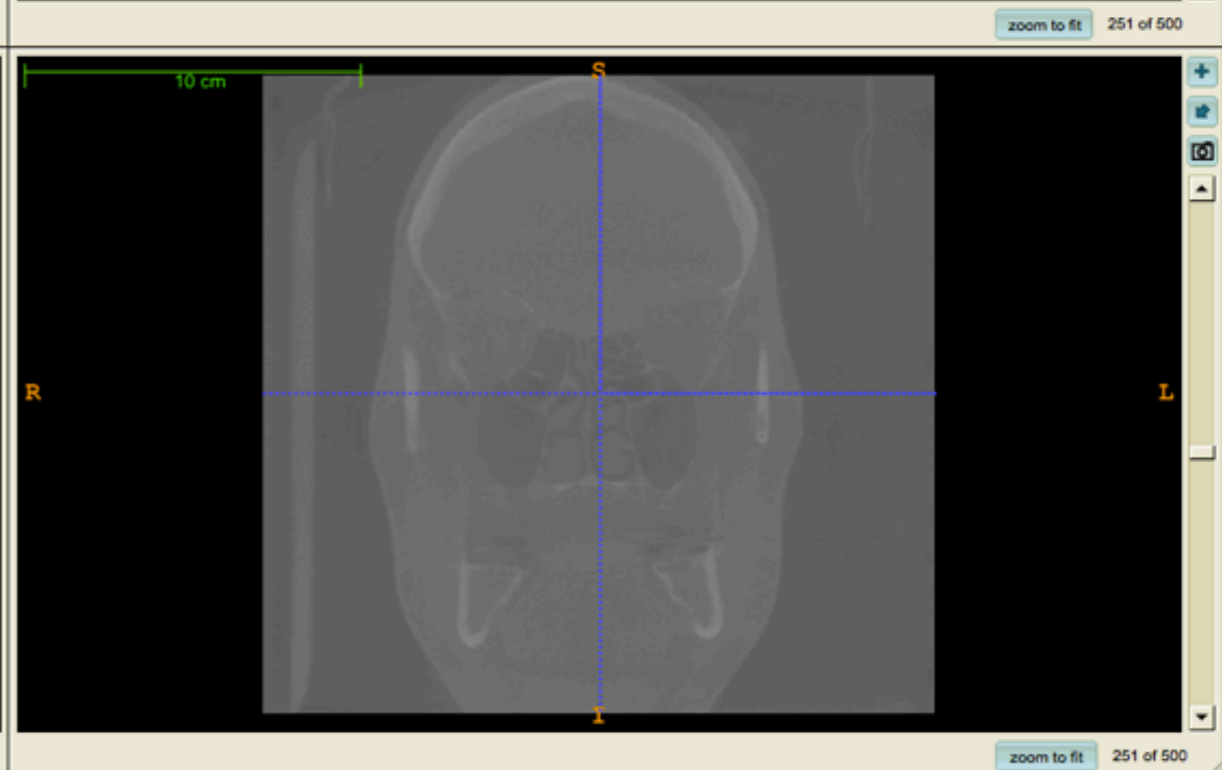
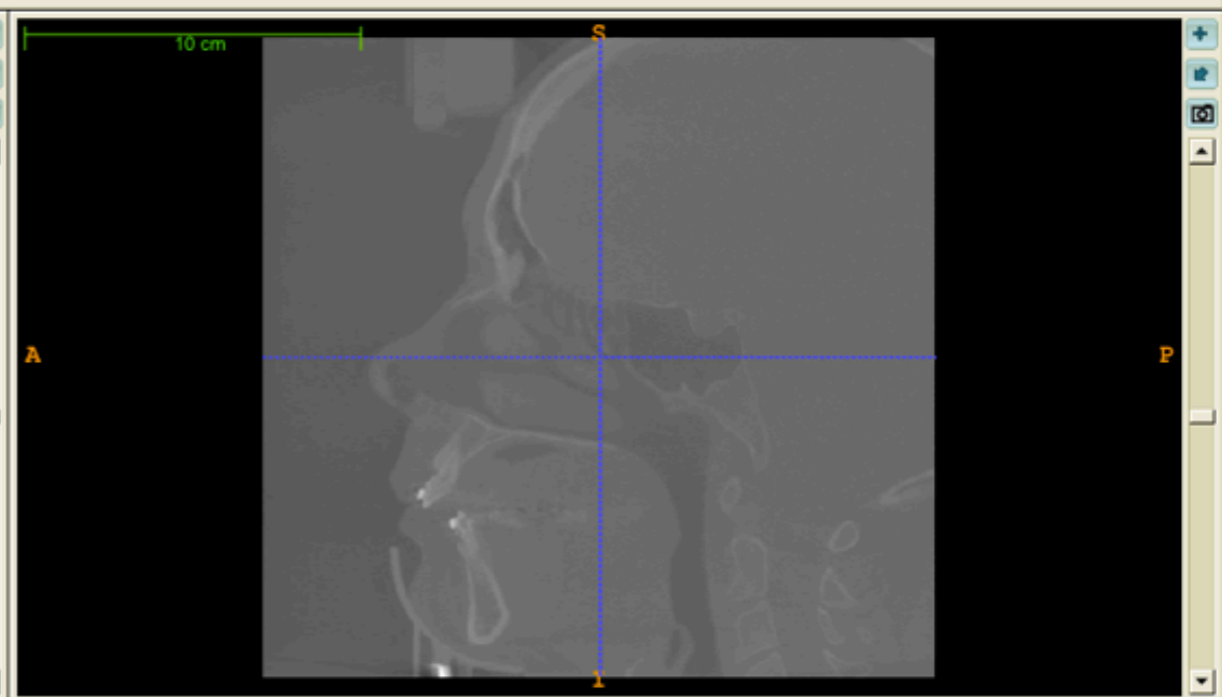
input image intensity

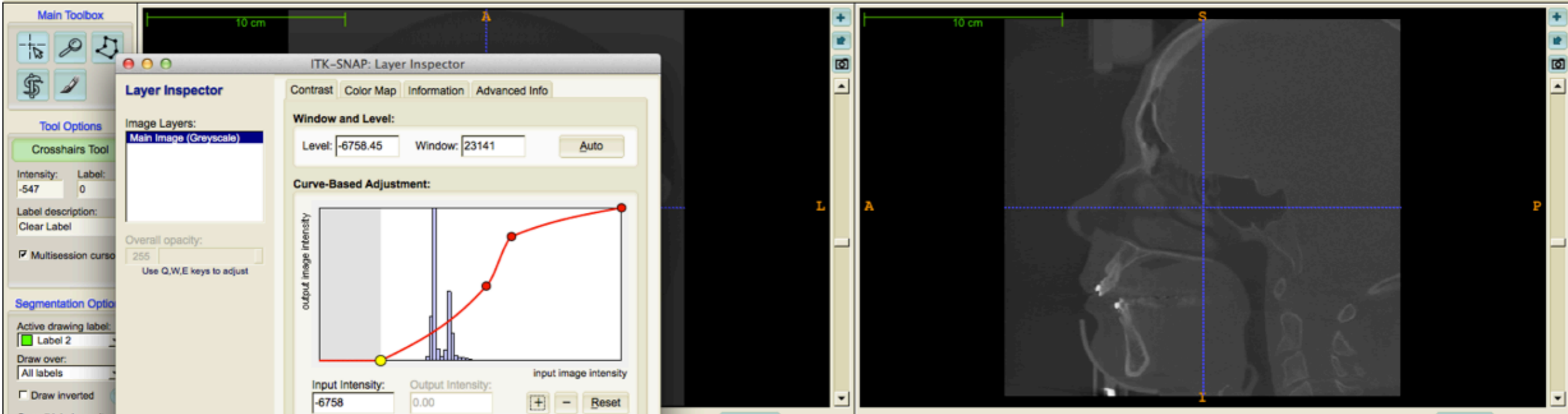
Input Intensity: -12672 Output Intensity: 0 + - Reset

**Histogram Options:**

Bin size: 342 Cutoff (%): 100.0  Log scale

Close





### ITK-SNAP: Layer Inspector

Layer Inspector

Image Layers:  
Main Image (Greyscale)

Window and Level:  
Level: -6758.45 Window: 23141 Auto

Curve-Based Adjustment:

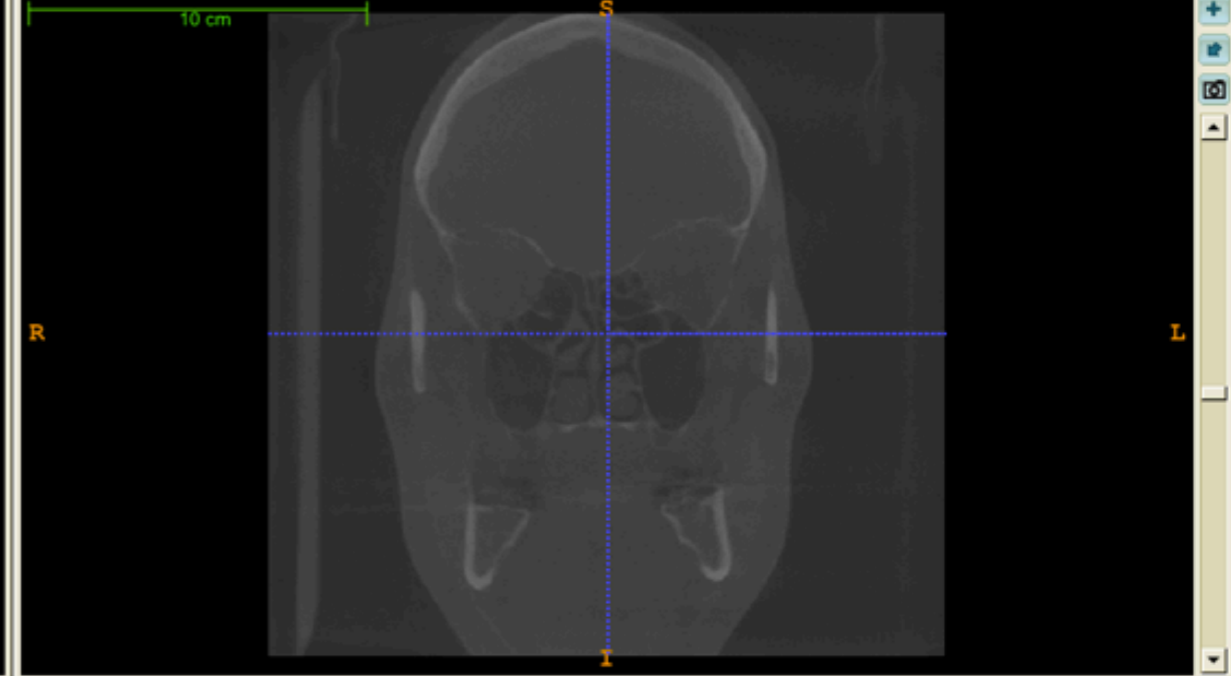
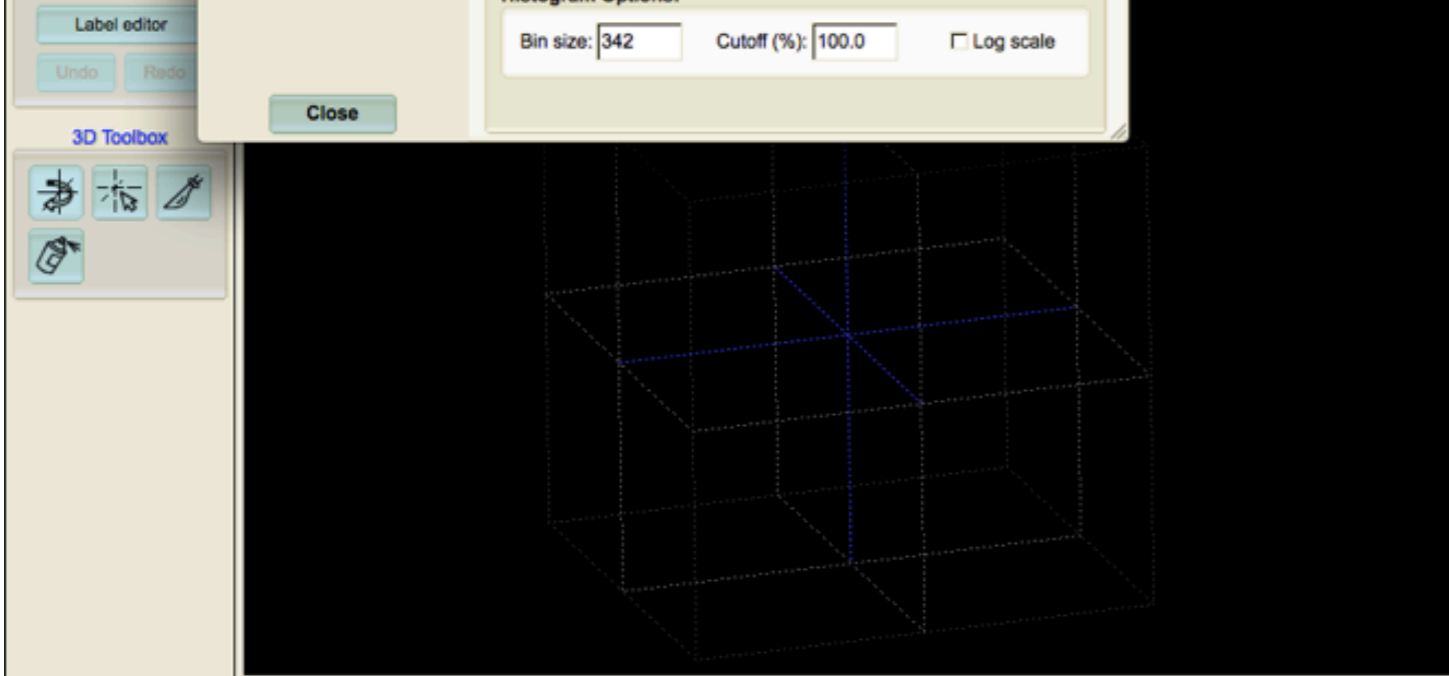
Input Intensity: -6758 Output Intensity: 0.00 + - Reset

Histogram Options:  
Bin size: 342 Cutoff (%): 100.0  Log scale

Overall opacity: 255  
Use Q,W,E keys to adjust

Close

zoom to fit 239 of 478 zoom to fit 251 of 500



accept update mesh reset view zoom to fit 251 of 500

- File
  - Segmentation
  - Overlay
  - Tools
  - Layout
  - Help
- Open Greyscale Image... ⌘G
  - Open RGB Image... ⌘R
  - Open Recent
  - Save
    - Greyscale Image...
  - Export
    - Preprocessed Image... ⌘P
    - Greyscale Image Region... ⌘R
    - Level Set Function... ⌘L
  - Unload All Images ⌘U
  - New ITK-SNAP Window ⌘N
  - Quit ⌘Q

**Crosshairs Tool**

Intensity: -547 Label: 0

Label description:  
Clear Label

Multisession cursor

**Segmentation Options**

Active drawing label:  
Label 2

Draw over:  
All labels

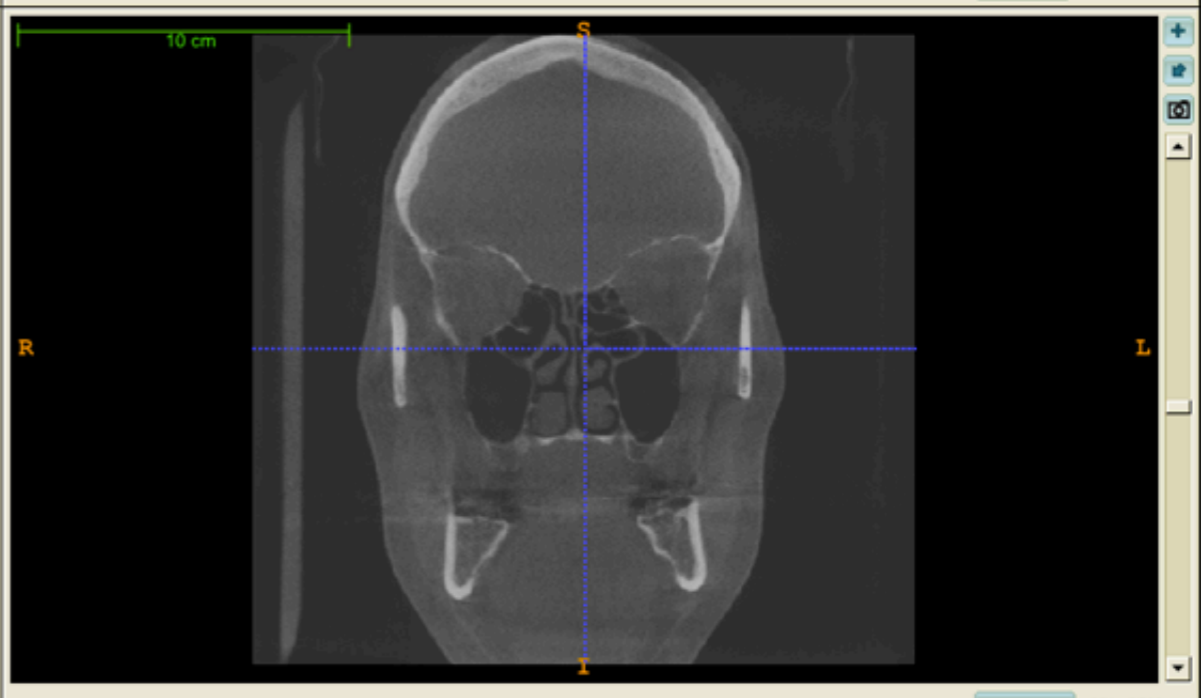
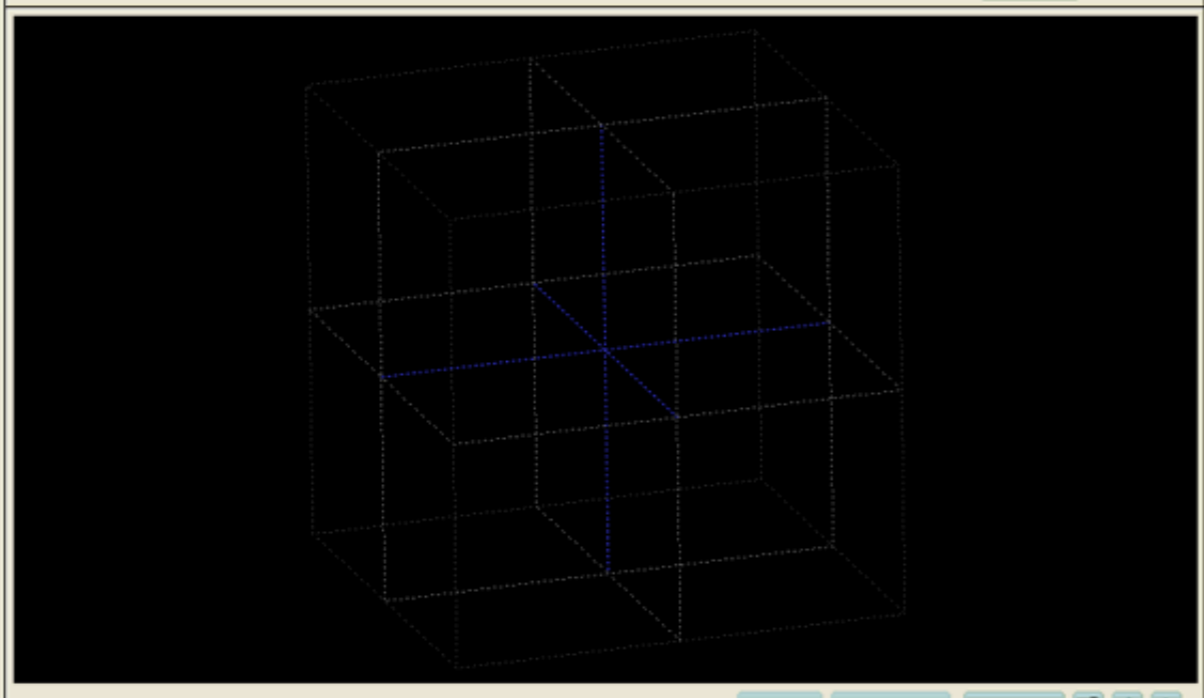
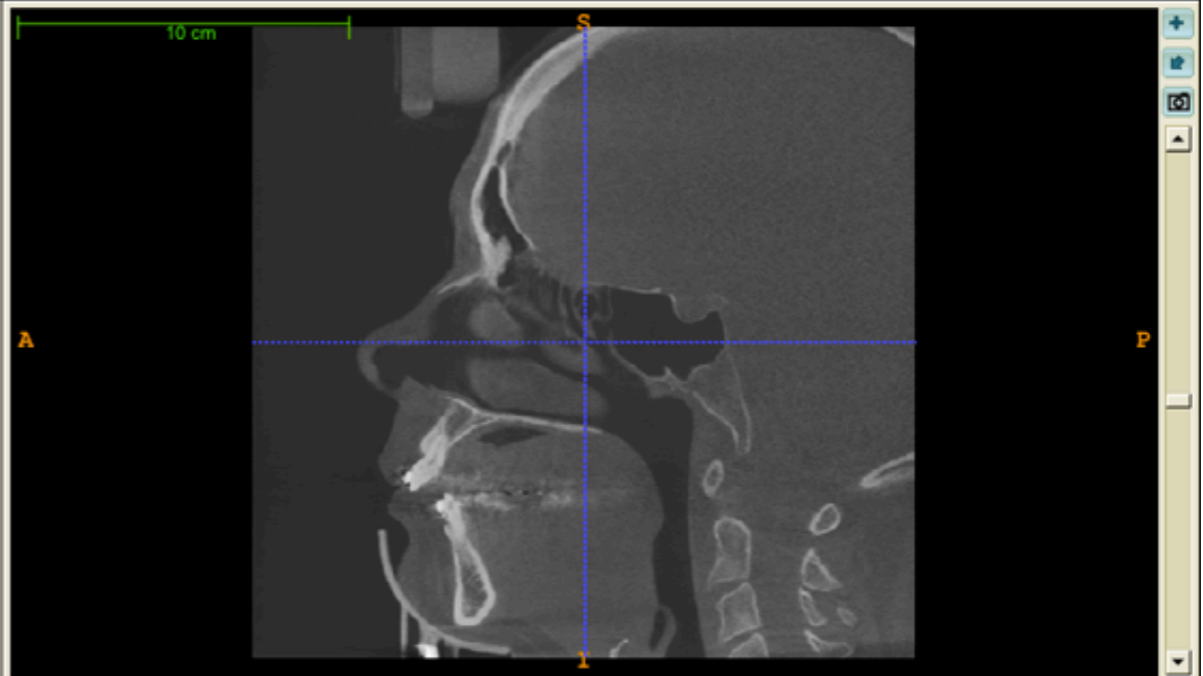
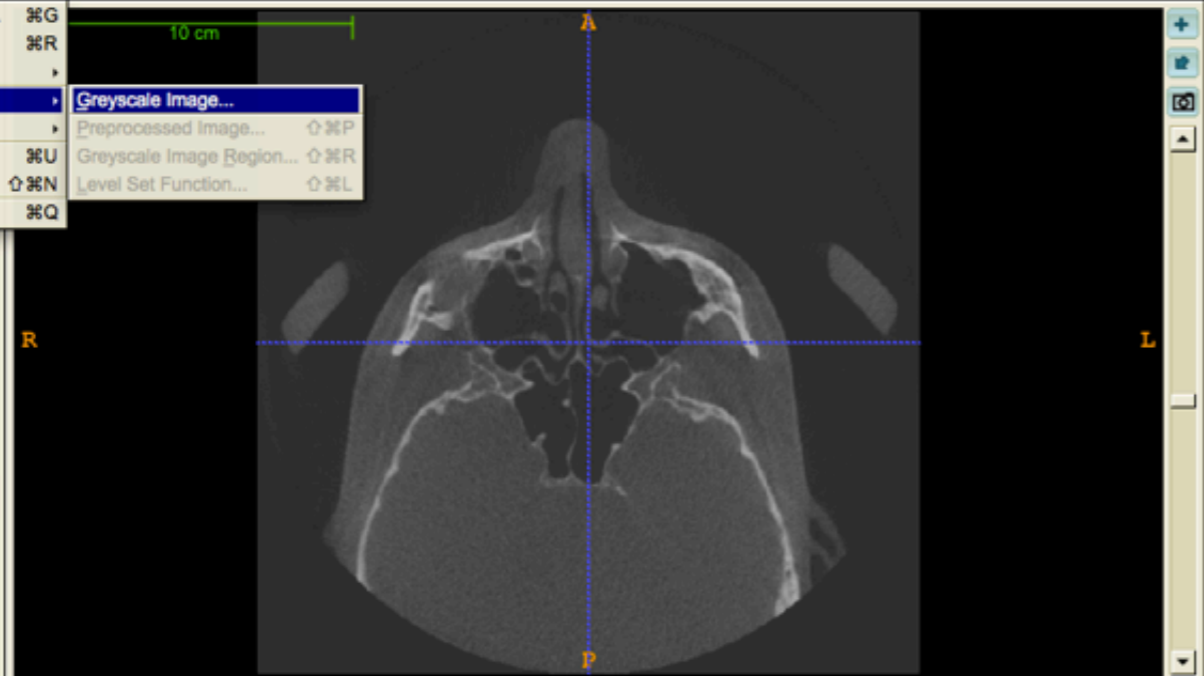
Draw inverted ?

Overall label opacity:  
128

Label editor

Undo Redo

**3D Toolbox**



Wizard for saving a Greyscale image

Choose a file name to save the Greyscale image:

Filename:

Image file format:

Save Image As

Save As:

Format: All Image Files \*.{mha,mhd,g...}

- Desktop
- Joao robertogoncalves
- Applications
- Documents
- 18 Holding back the years.wma
- Skype
- CBCT Data
- About Stacks.pdf
- Bom achei q...niciais do Dr
- Kigo Video Converter
- Learning Keynote.key
- Microsoft User Data
- OsiriX Data
- Patient\_X
- ShiftIt.app
- Slicer3-3.6....arwin-x86 3
- WindowsPC

Segmentation Options

Active drawing label:

Draw over:

Draw inverted

Overall label opacity:

3D Toolbox

accept update mesh reset view

zoom to fit 251 of 500

Wizard for saving a Greyscale image

Choose a file name to save the Greyscale image:

Filename:

Image file format:

Save Image As

Save As:

Folder: Patient\_X

FAVORITES

- Desktop
- joaorbertogoncalves
- Applications
- Documents
- 18 Holding back the years.wma

DEVICES

- Skype
- CBCT Data

Format: All Image Files \*.mha,mhd,g...

Segmentation Options

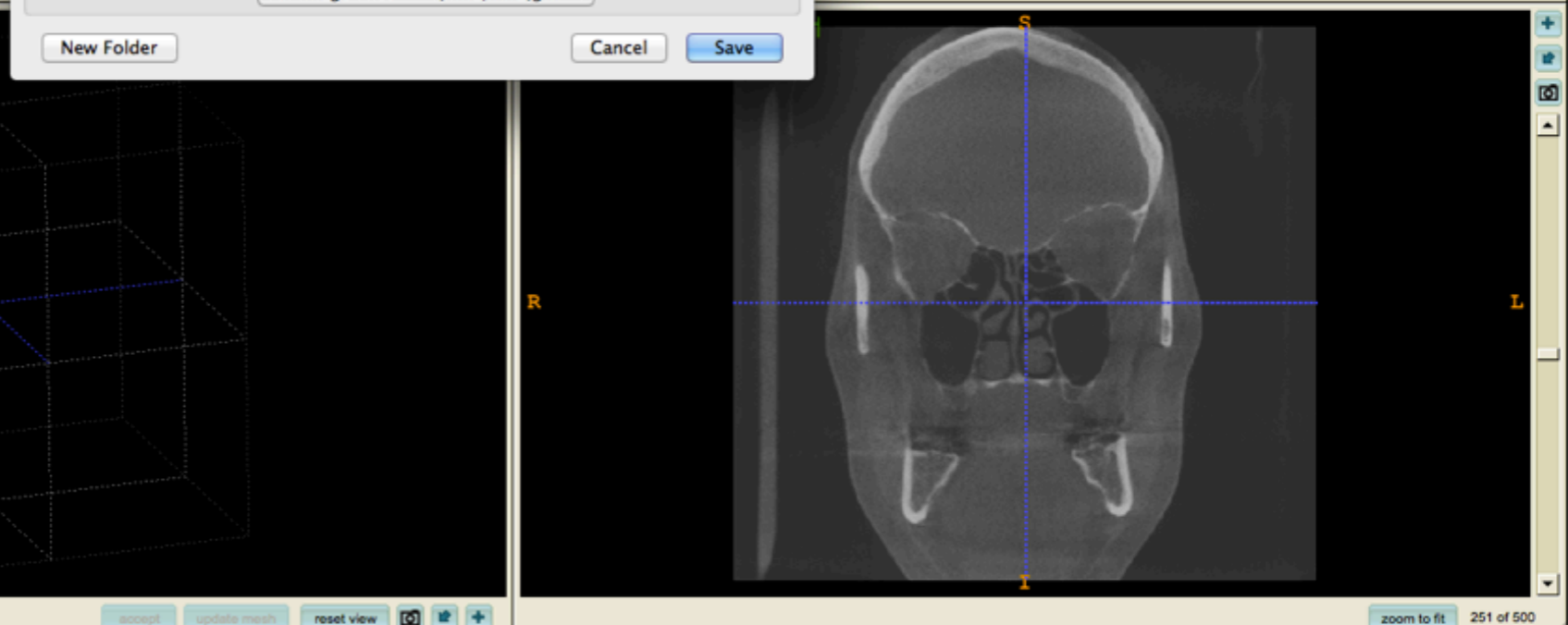
Active drawing label:

Draw over:

Draw inverted

Overall label opacity:

3D Toolbox



Wizard for saving a Greyscale image

Choose a file name to save the Greyscale image:

Filename:  
/Users/joaorobertogoncalves/Documents/Patient\_X/T1.gipl.gz

Browse... History

Image file format:  
GIPL File

Save Cancel

Segmentation Options

Active drawing label:  
Label 2

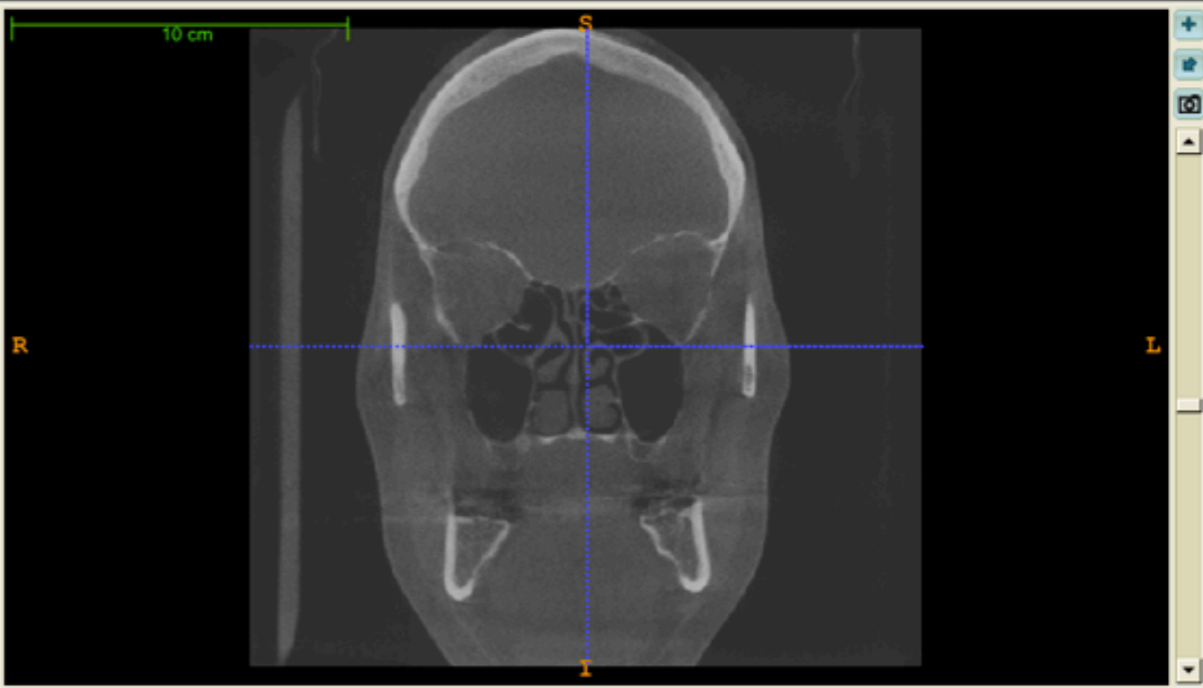
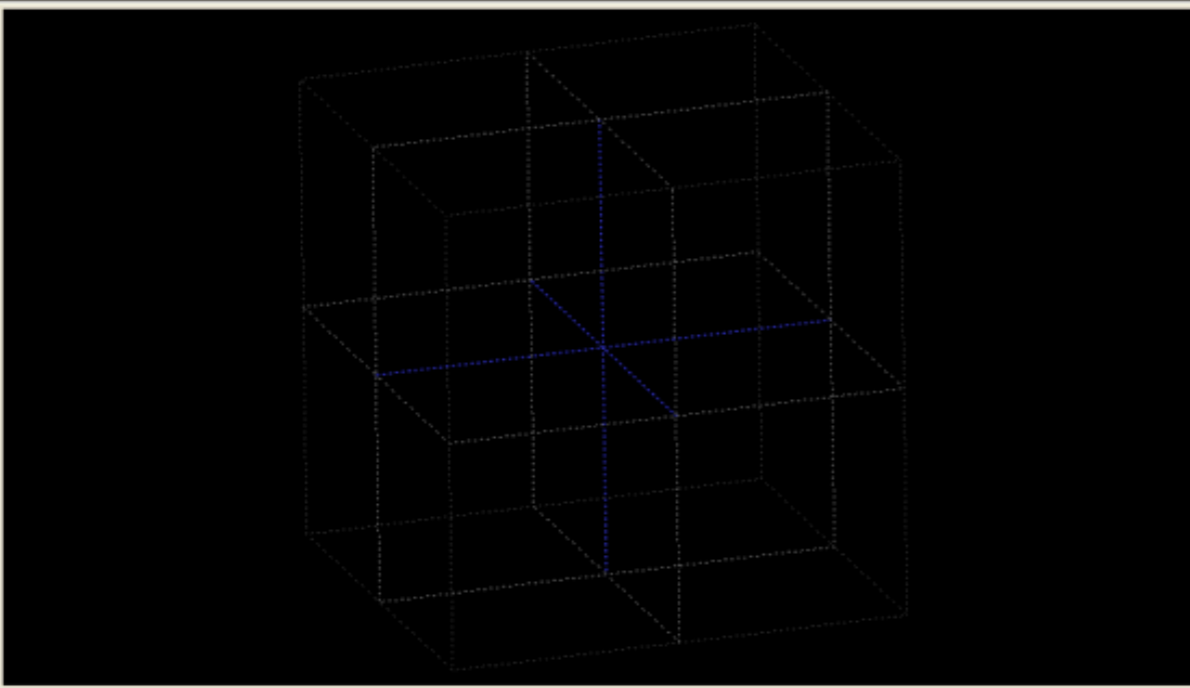
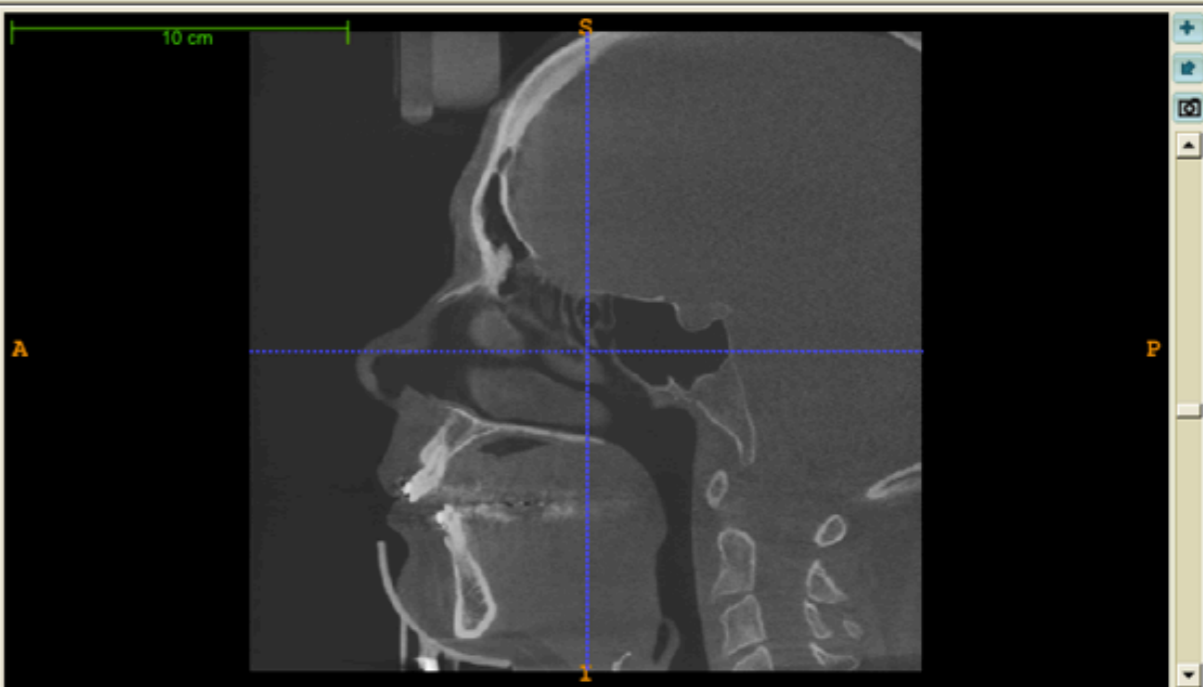
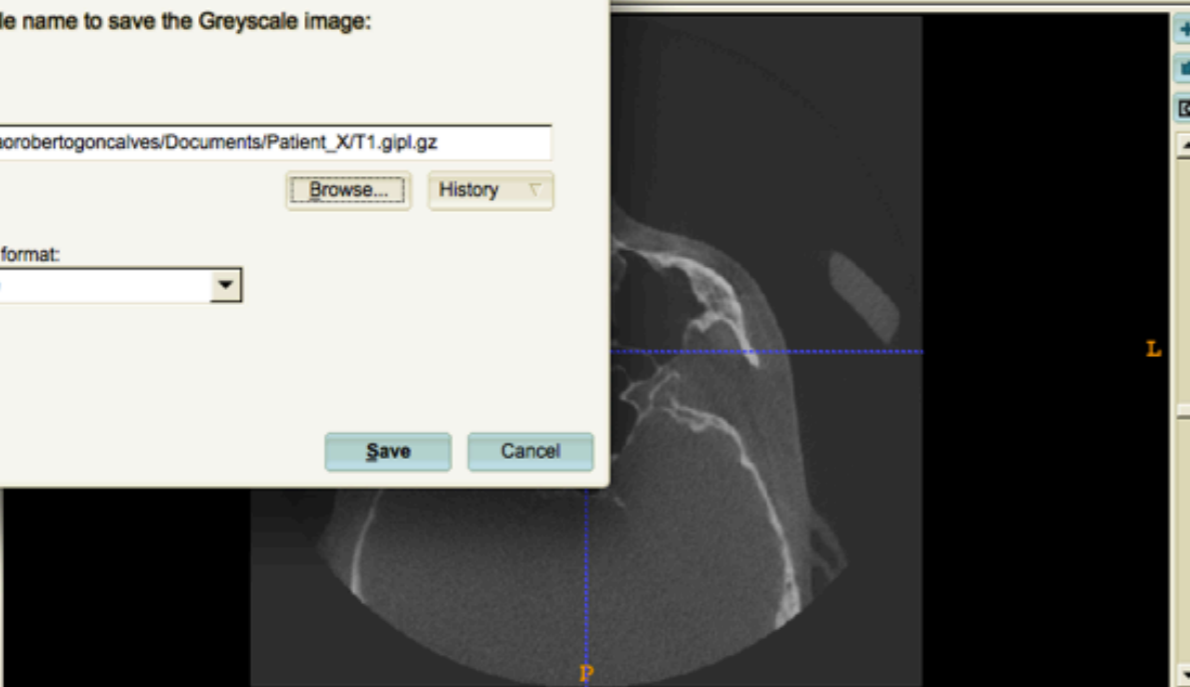
Draw over:  
All labels

Draw inverted

Overall label opacity:  
128

Label editor  
Undo Redo

3D Toolbox



**ITK-SNAP**  
Version 2.2.0  
May 4, 2011

Tip of the day:

ITK-SNAP supports multiple image layers. Each layer has its own contrast settings, opacity, and color map. Load layers using the 'Overlay' menu. Edit them using the Layer Inspector, under 'Tools'.

Next Tip

Load Image

Patient\_X

FAVORITES

- All My Files
- Desktop
- joaerobertogoncalves
- Applications
- Documents
- 18 Holding back the years.wma

DEVICES


- Skype
- CBCT Data

MEDIA

- Music
- Photos
- Movies

About Stacks.pdf  
Bom achei q...niciais do Dr  
Kigo Video Converter  
Learning Keynote.key  
Microsoft User Data  
OsiriX Data  
Patient\_X  
ShiftIt.app  
Slicer3-3.6....arwin-x86 3  
WindowsPC

T1.gipl.gz



Name T1.gipl.gz  
Kind gzip compressed archive  
Size 123,9 MB  
Created Hoje 20:20  
Modified Hoje 20:21  
Last opened Hoje 20:21

Enable: All Image Files

Cancel Open



*Imagine:*

**Downsize to 0.5**